



VALORE

S M O U H A



EL GHONIEMY
GROUP

15766
— HOTLINE —




Creating *Luxury*

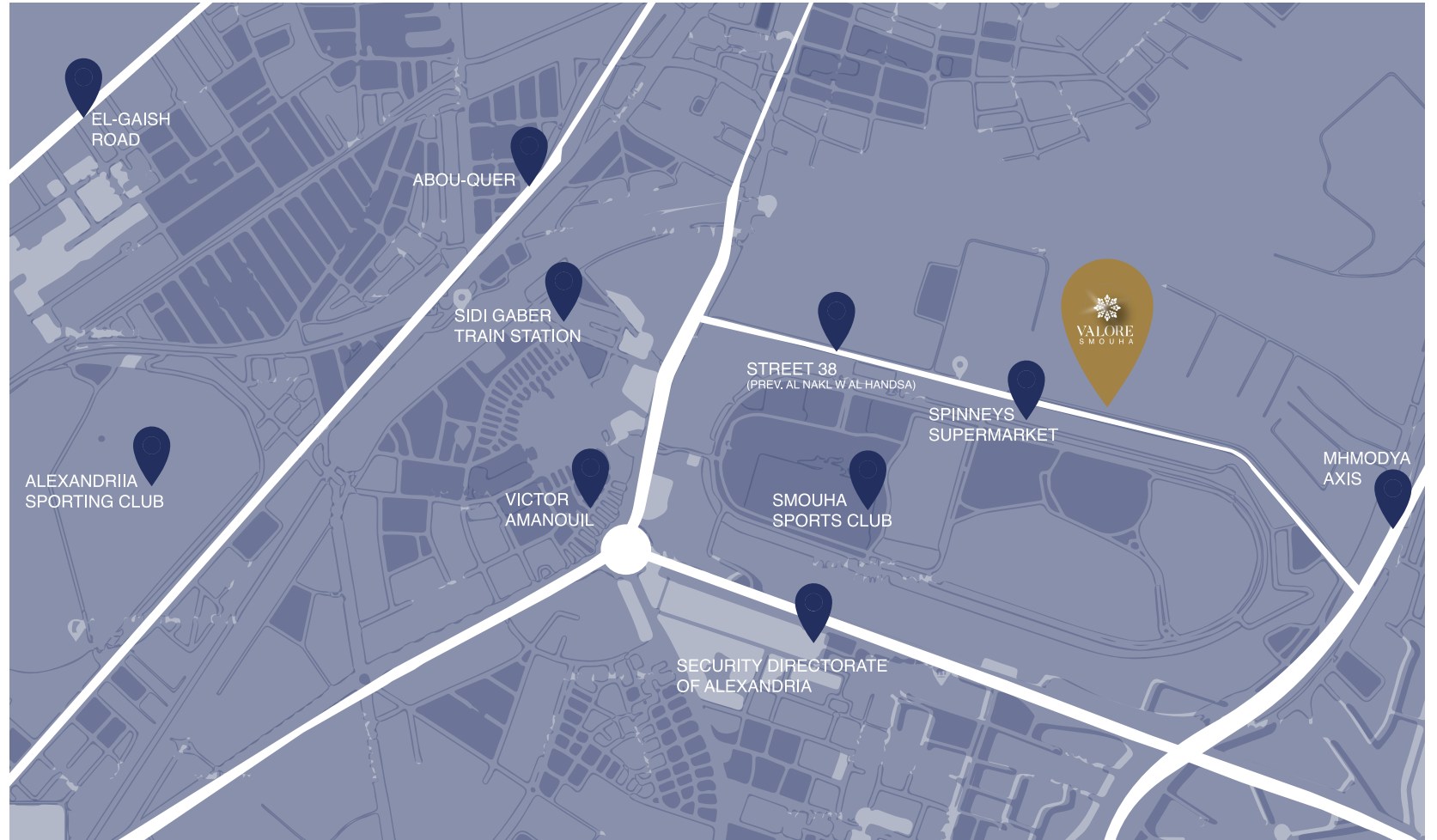


Location

Among the most significant roads and facilities in Smouha, one of Alexandria's most opulent neighborhoods. The Valore Smouha location was chosen so that you could be close to the popular attractions while still receiving the comfortable surroundings you have always desired.

في أرقبى المواقع بالإسكندرية بمنطقة سموحة وسط أهم الشوارع والخدمات، تم اختيار موقع فالوري.. لتجد نفسك وسط أهم الأماكن الحيوية التي تضمن لك كل عوامل الراحة التي تتمناها.

-  Smouha Sporting Club
-  Zahran Mall Smouha
-  Green Plaza Mall
-  Golden Jewel Beach & Hotel
-  San Stefano
-  City Center Alexandria
-  Raml Station



A Home made with love, offering an extraordinary experience from joy and happiness gathered together in one place connecting you with everything you love in a life made from diamonds just for you.



Valore Smouha.. #Creating_Luxury.

Facilities

Luxurious Entrance



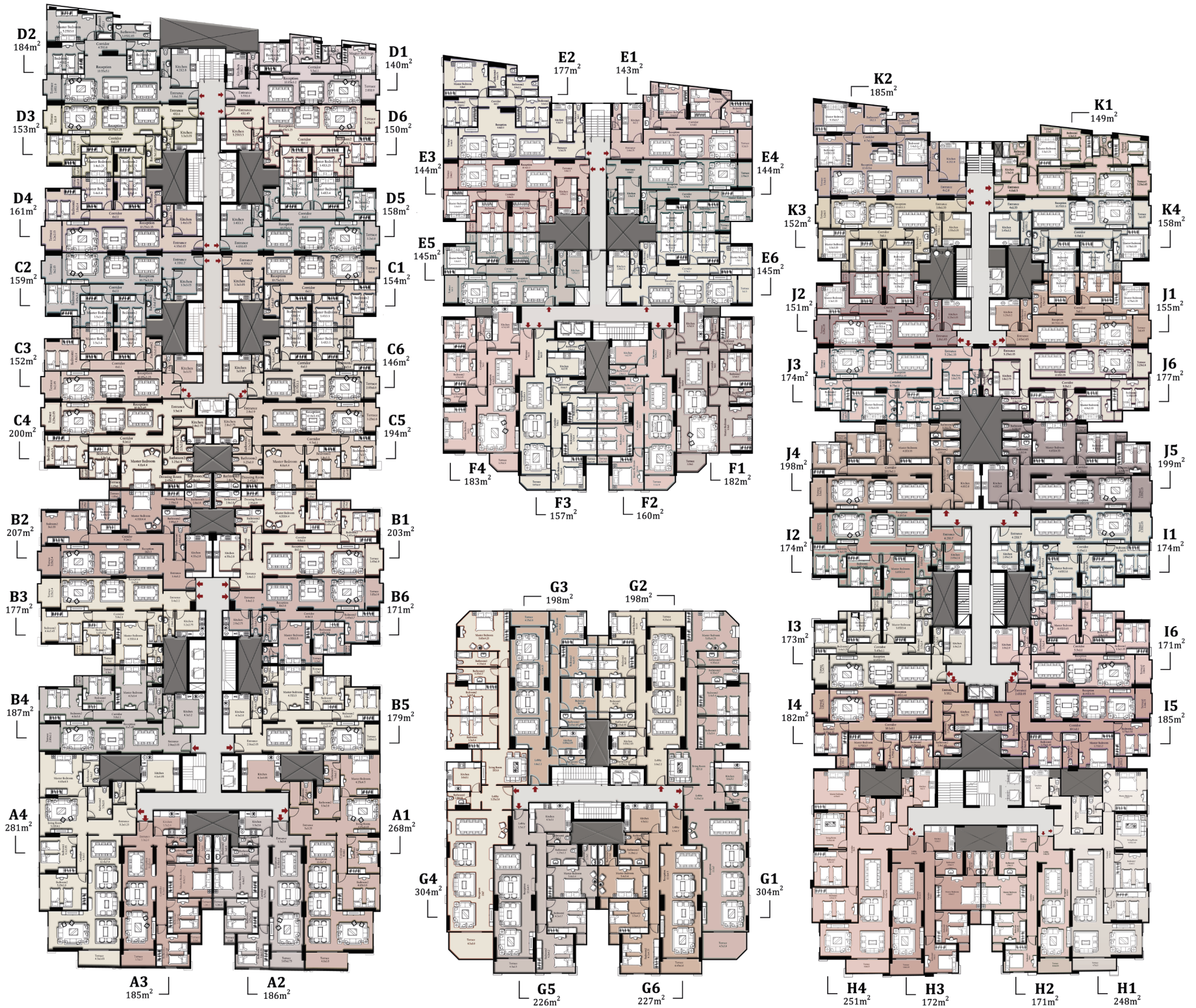
Commercial stores

Parking



Administrative Office

Master Plan

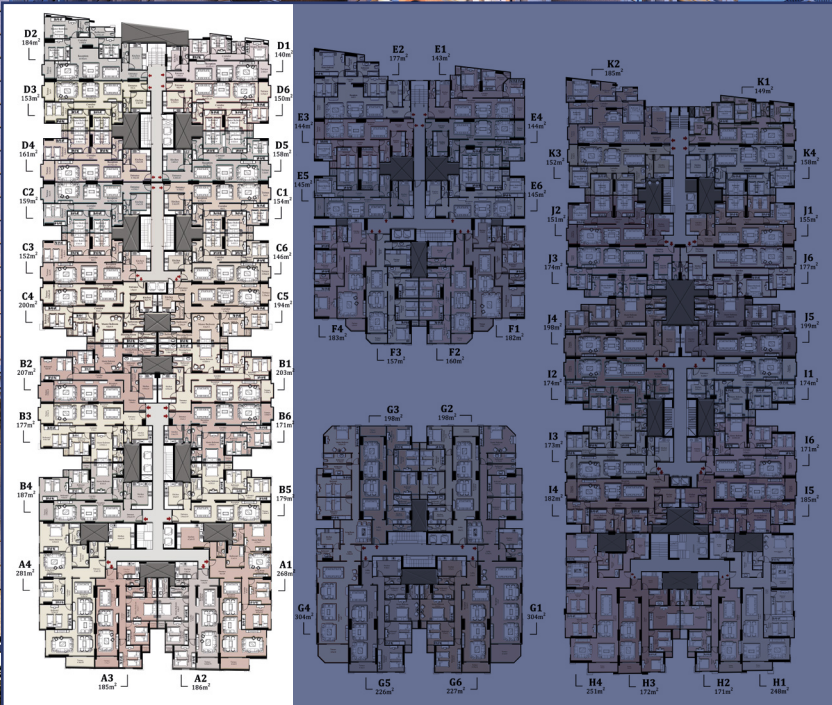
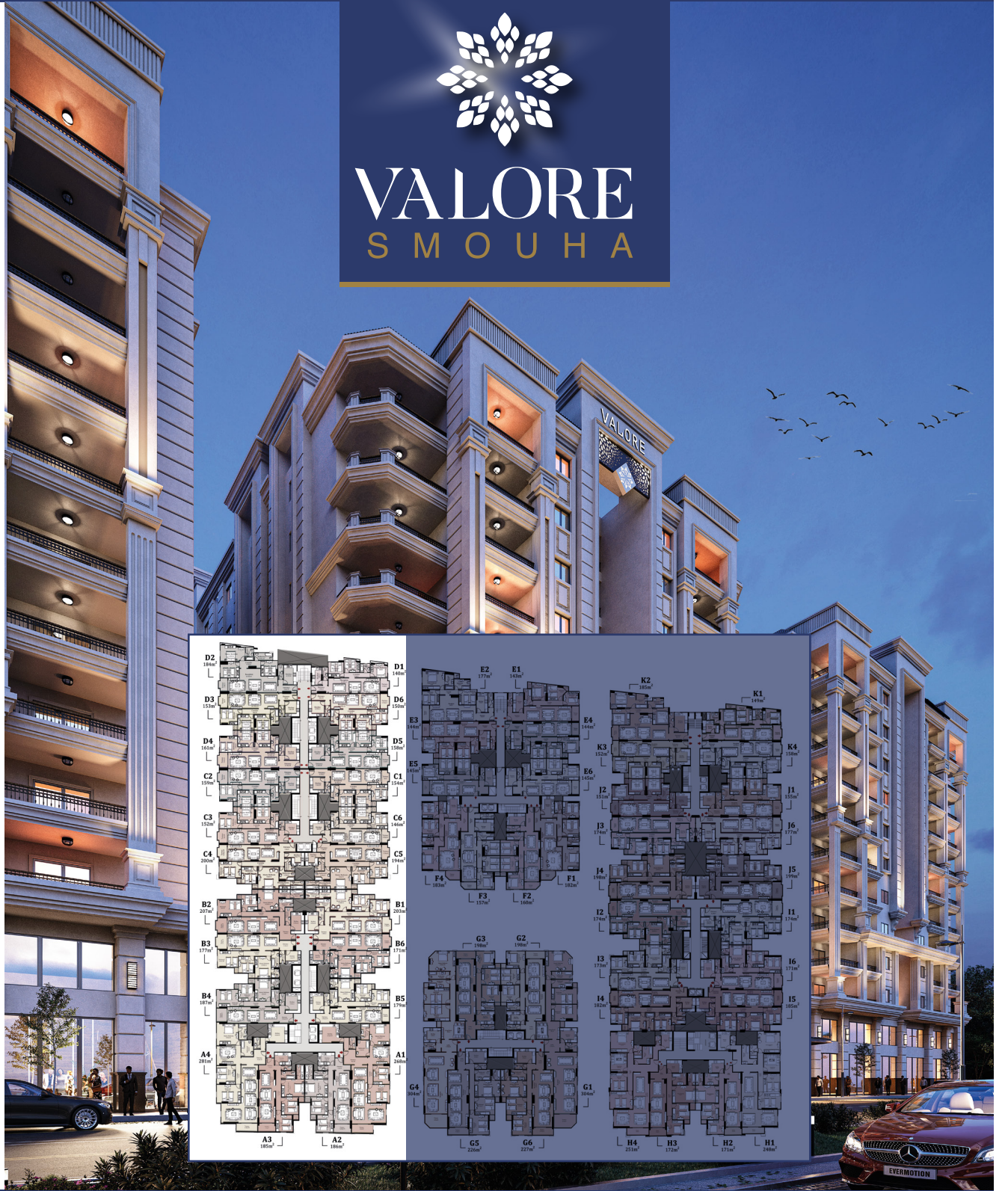
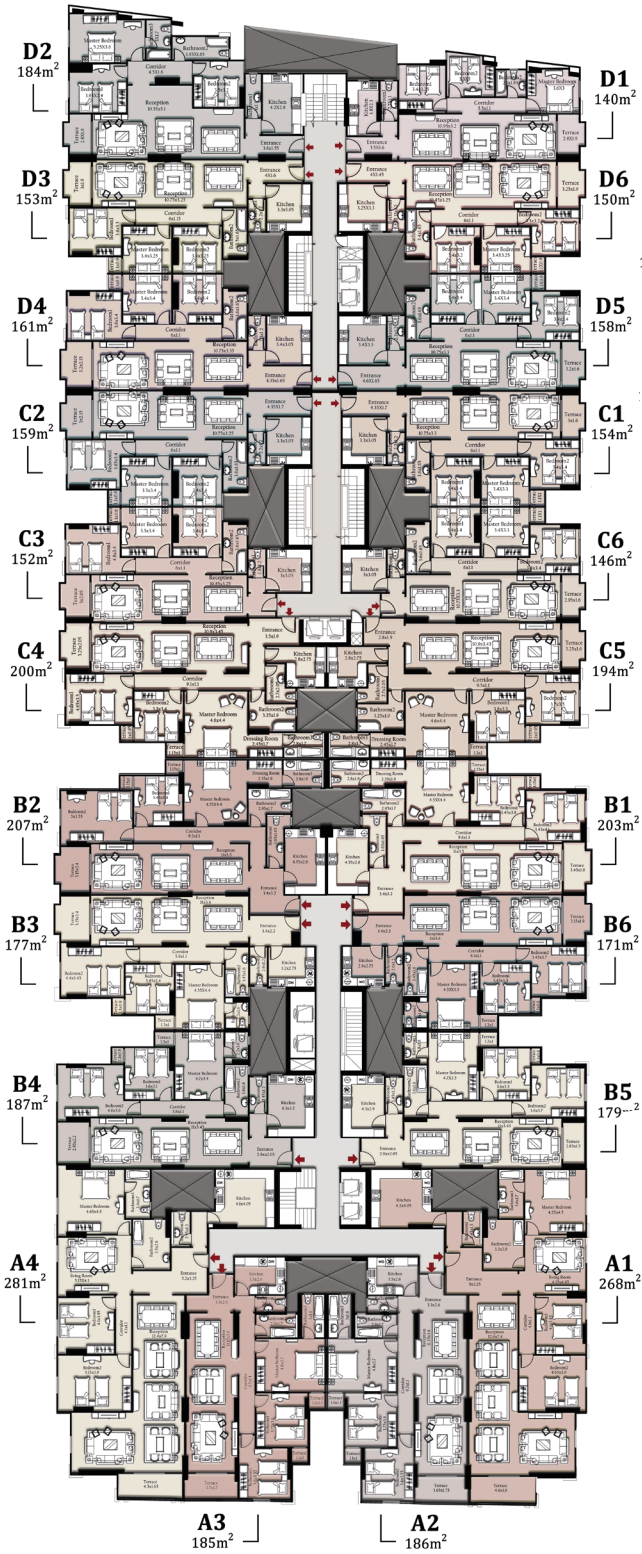


VALORE



Home of
Elegance

Building Plans - TYPE (A - B - C - D)



A4
281m²

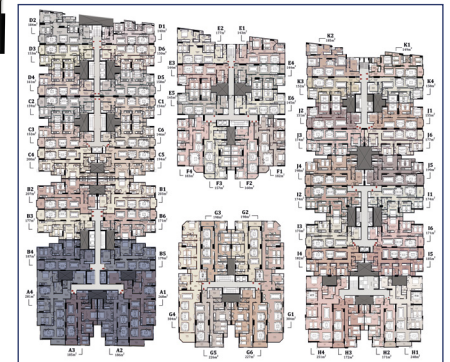
A1
268m²



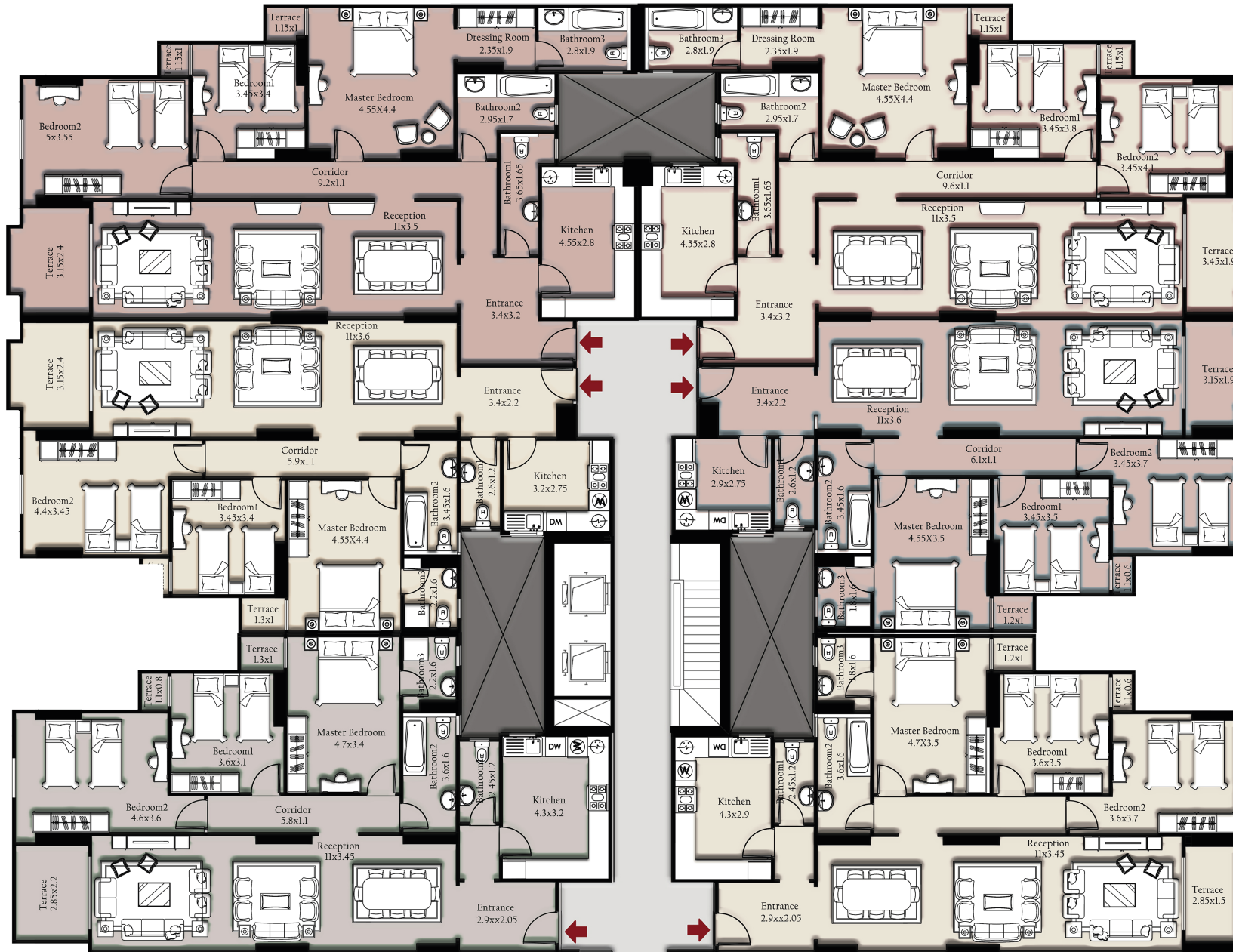
type - (A)

A3
185m²

A2
186m²



B2
207m²



B1
203m²

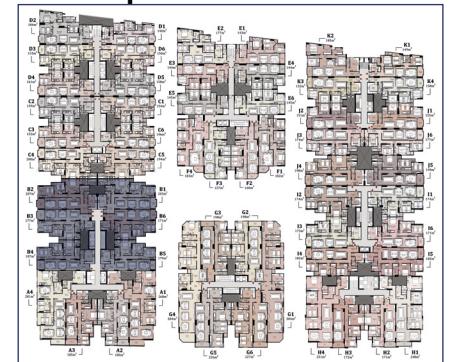
B3
177m²

B6
171m²

B4
187m²

B5
179m²

type - (B)



C2
159m²

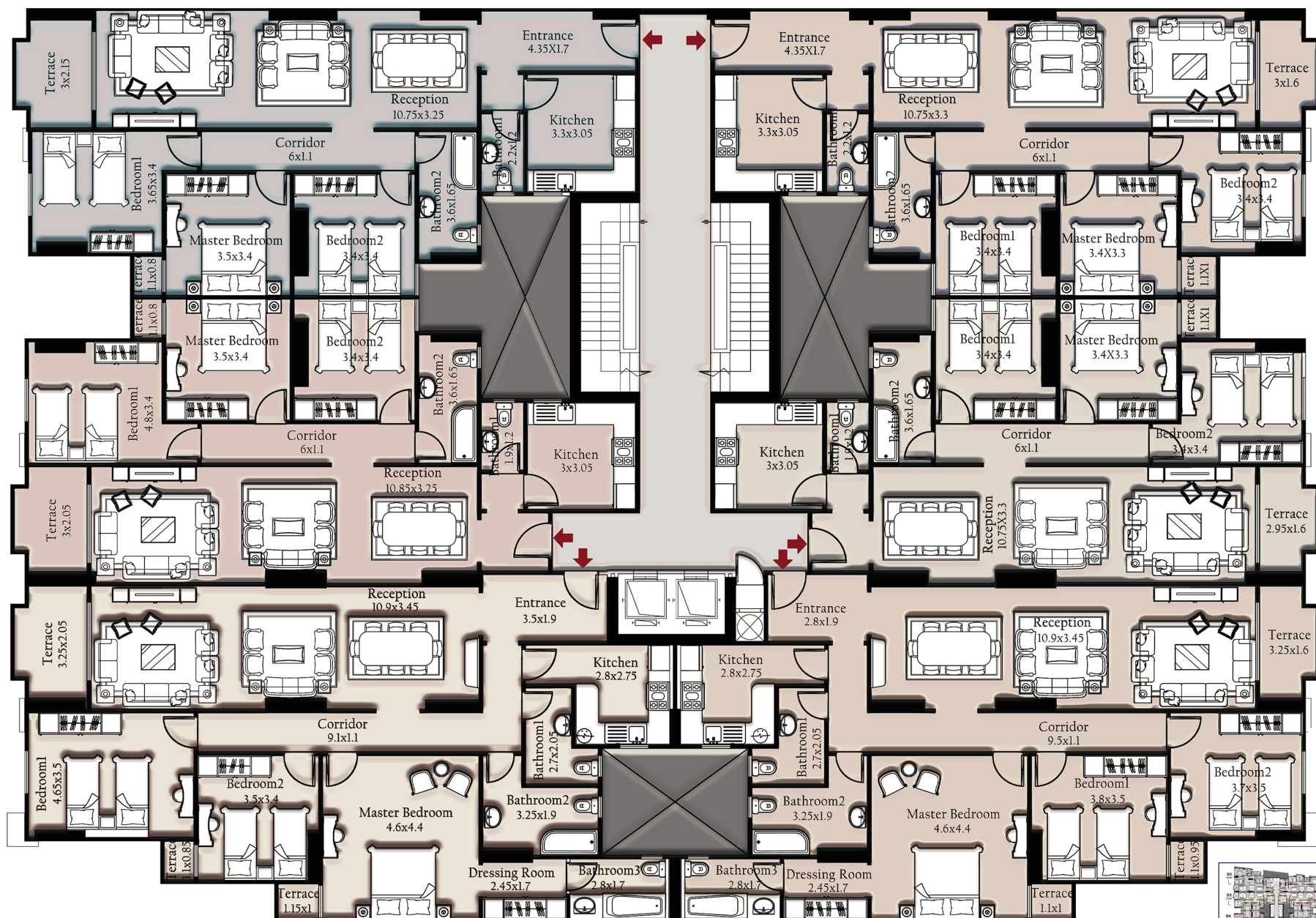
C1
154m²

C3
152m²

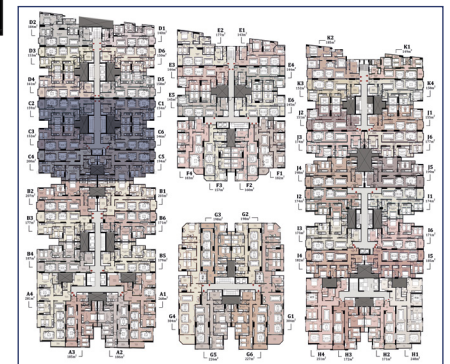
C6
146m²

C4
200m²

C5
194m²



type - (C)



D2
184m²

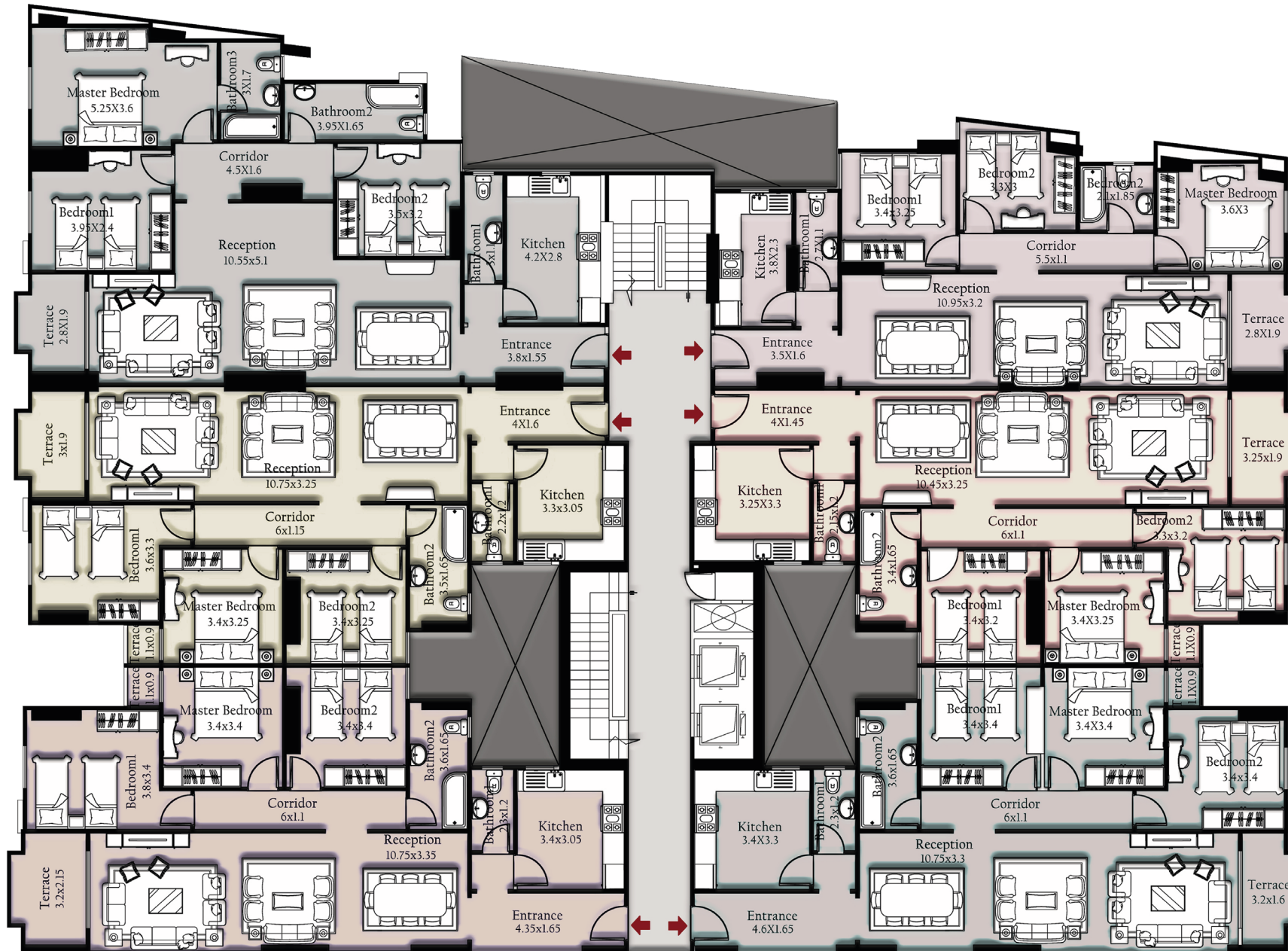
D3
153m²

D4
161m²

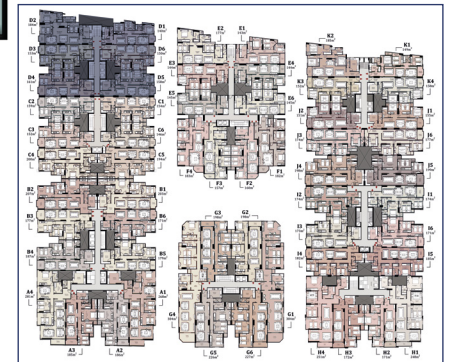
D1
140m²

D6
150m²

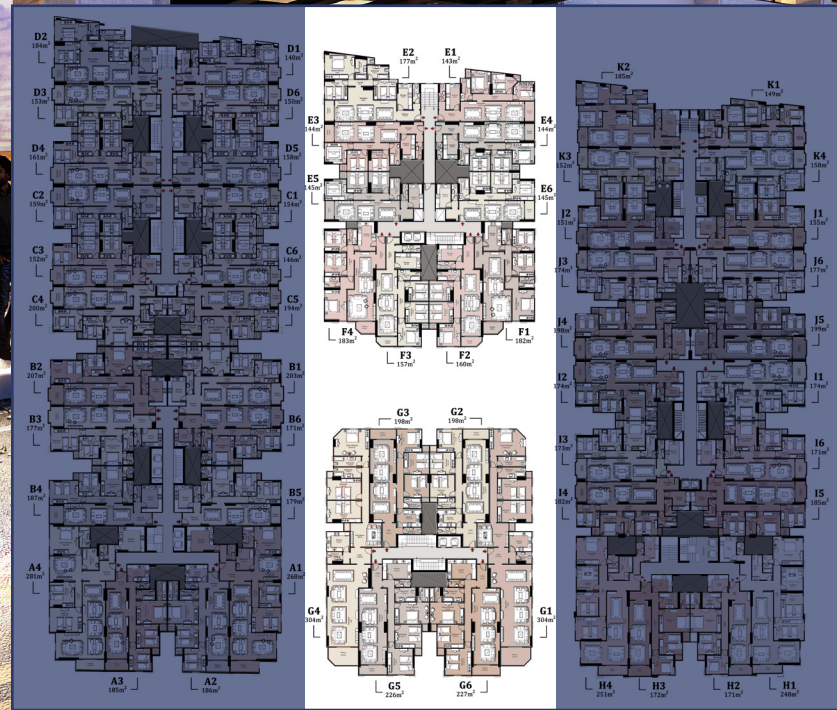
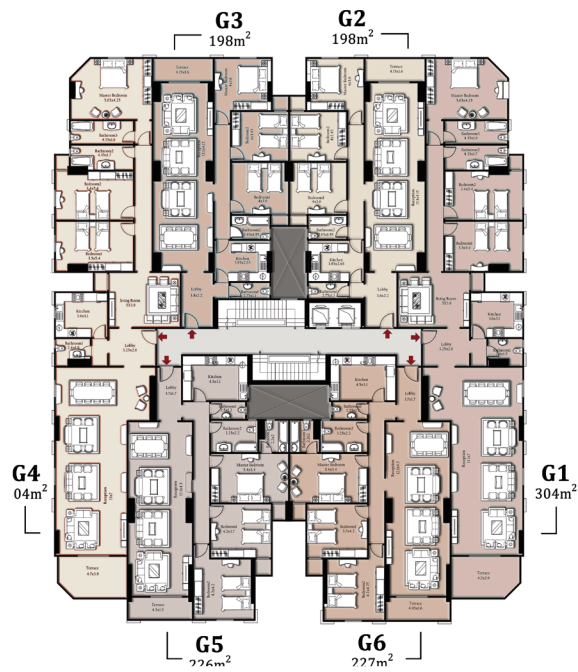
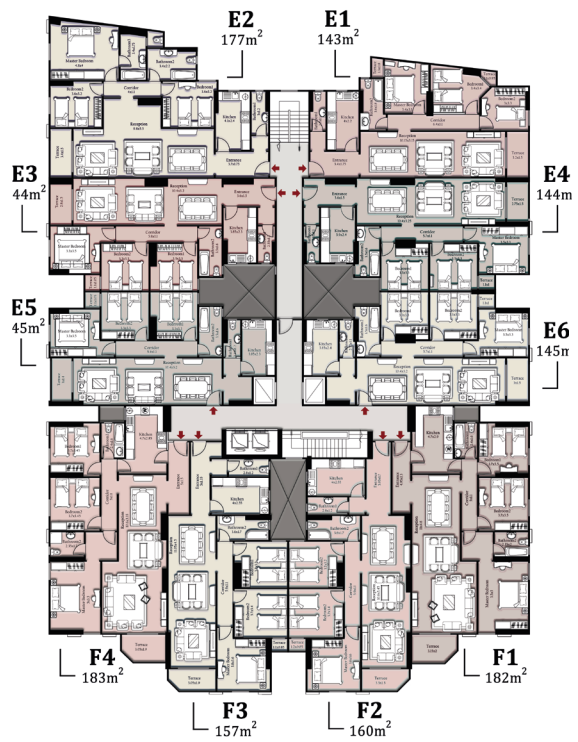
D5
158m²

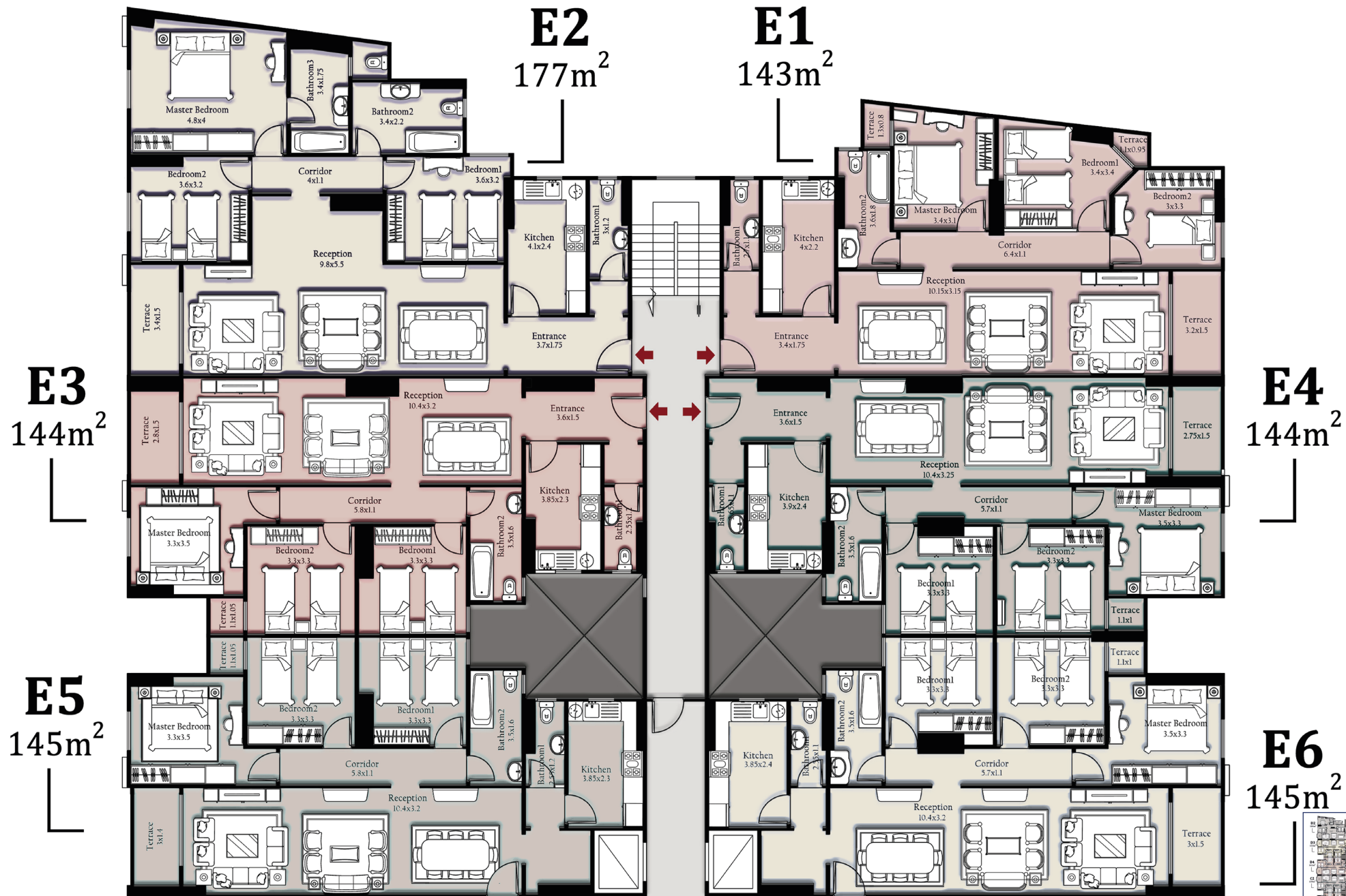


type - (D)

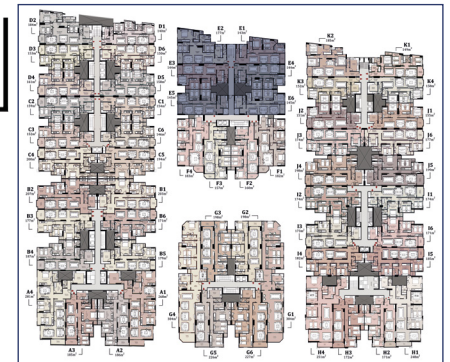


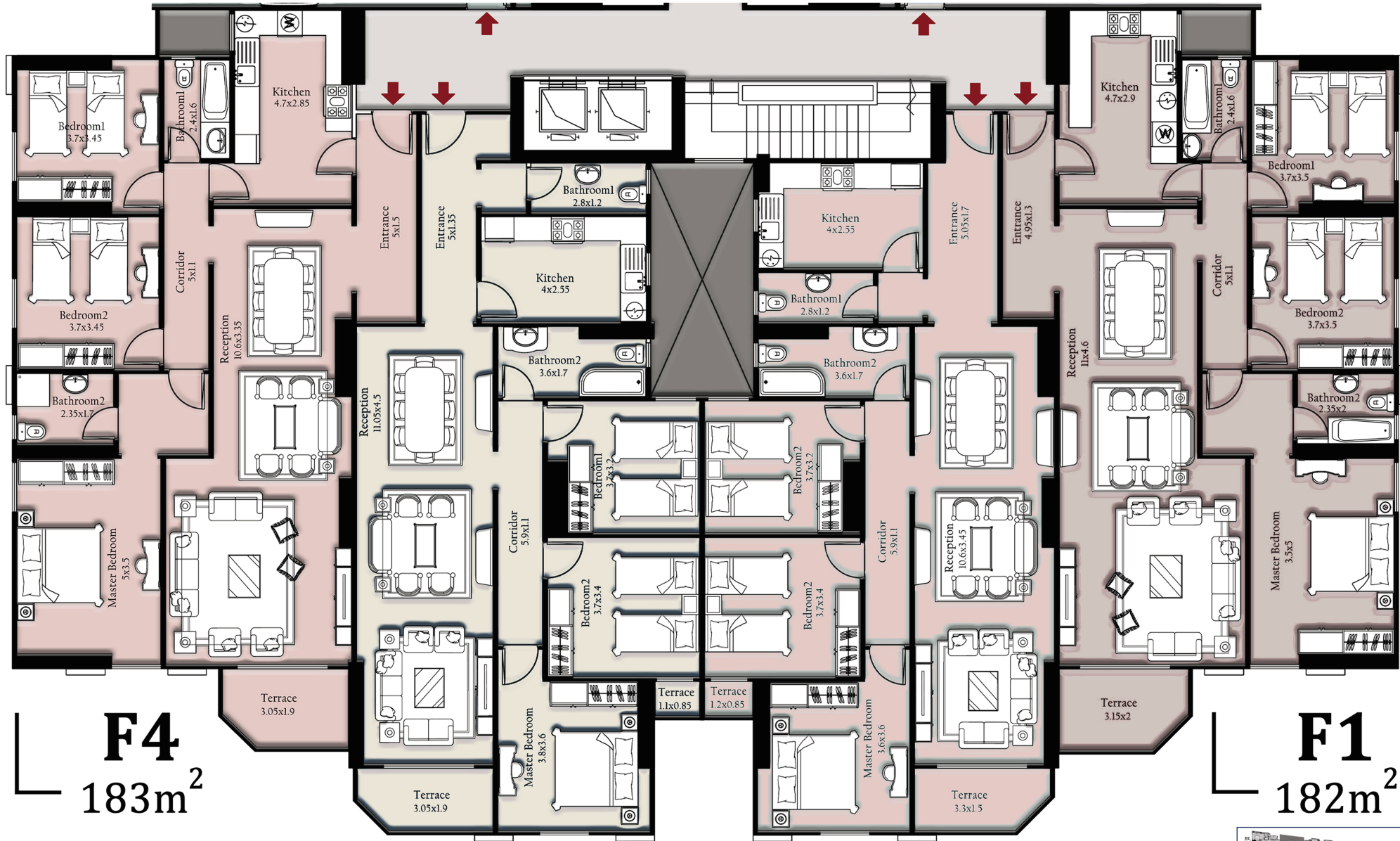
Building Plans - TYPE (E - F - G)





type - (E)





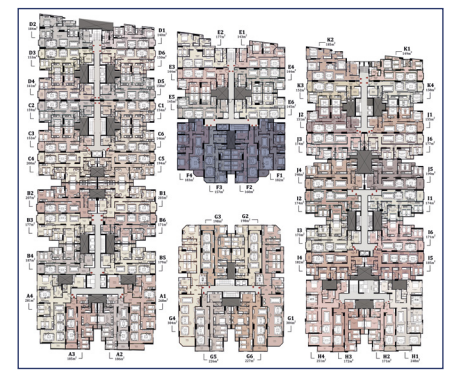
F4
183m²

F1
182m²

F3
157m²

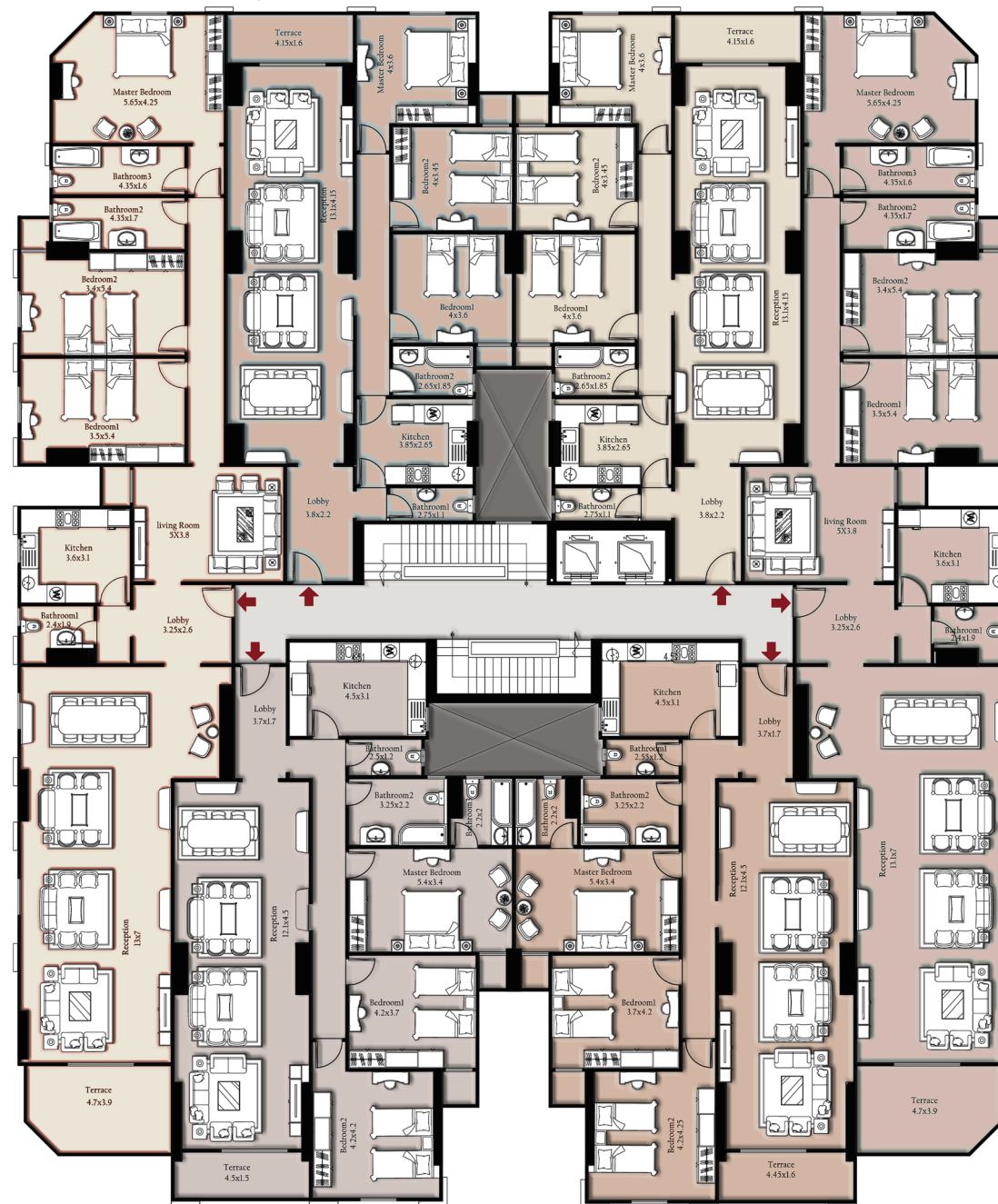
F2
160m²

type - (F)



G3
198m²

G2
198m²



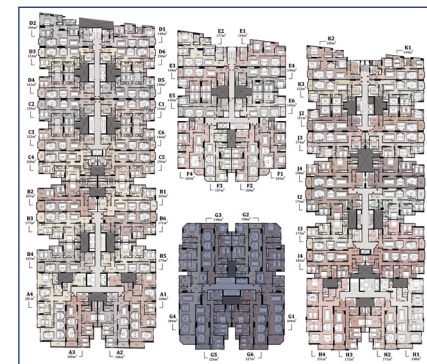
G4
304m²

G1
304m²

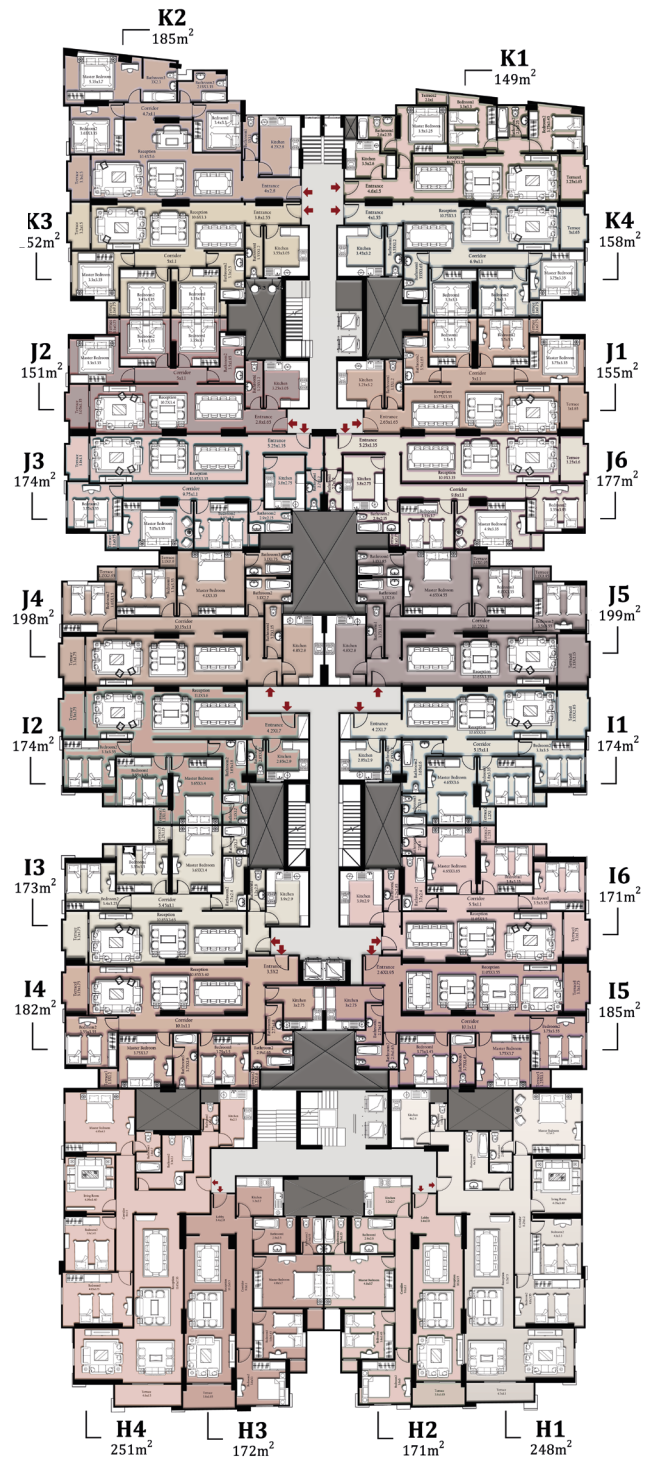
G5
226m²

G6
227m²

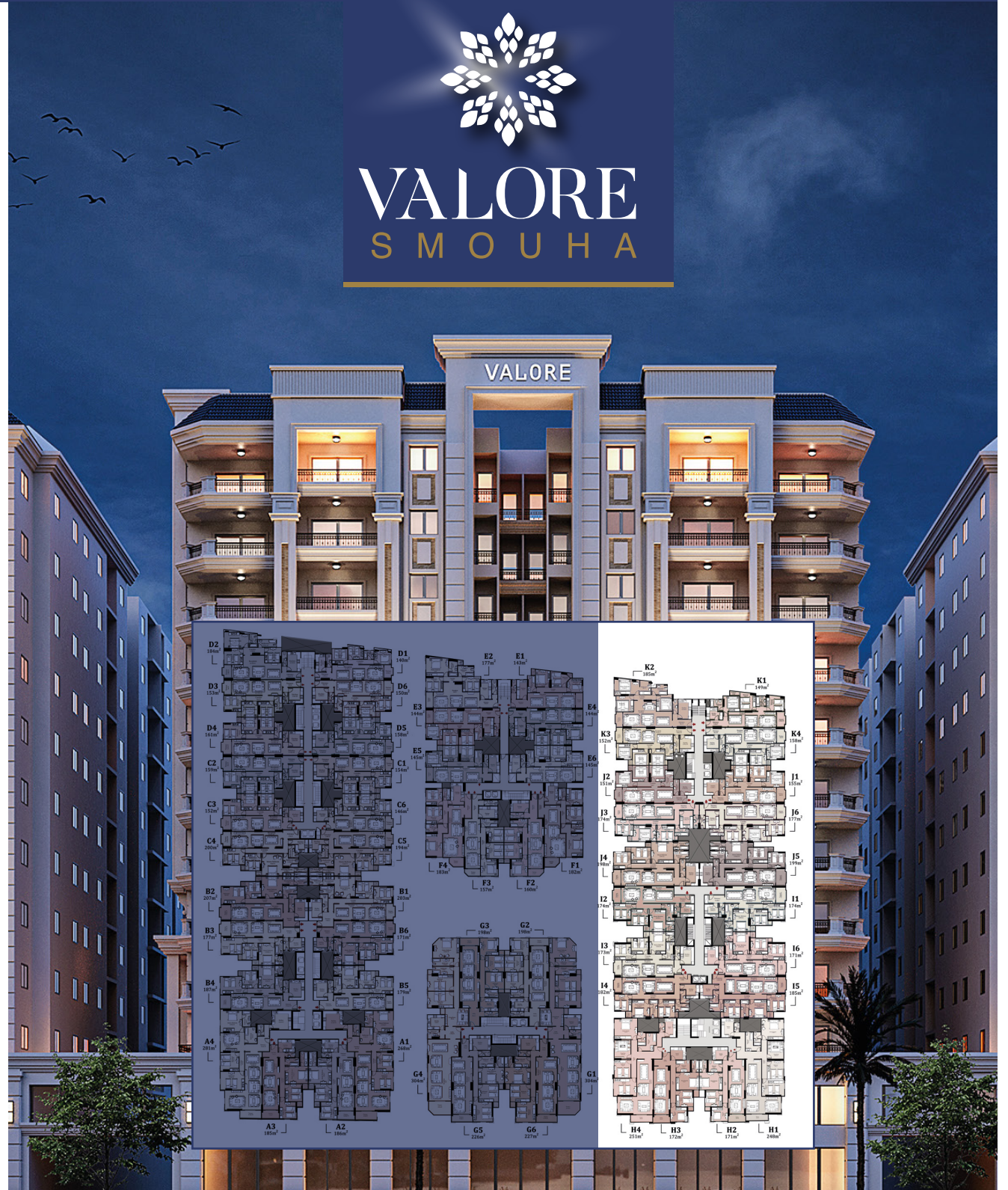
type - (G)



Building Plans - TYPE (K-J-I-H)



VALORE
SMOuha



K2

185m²

K1

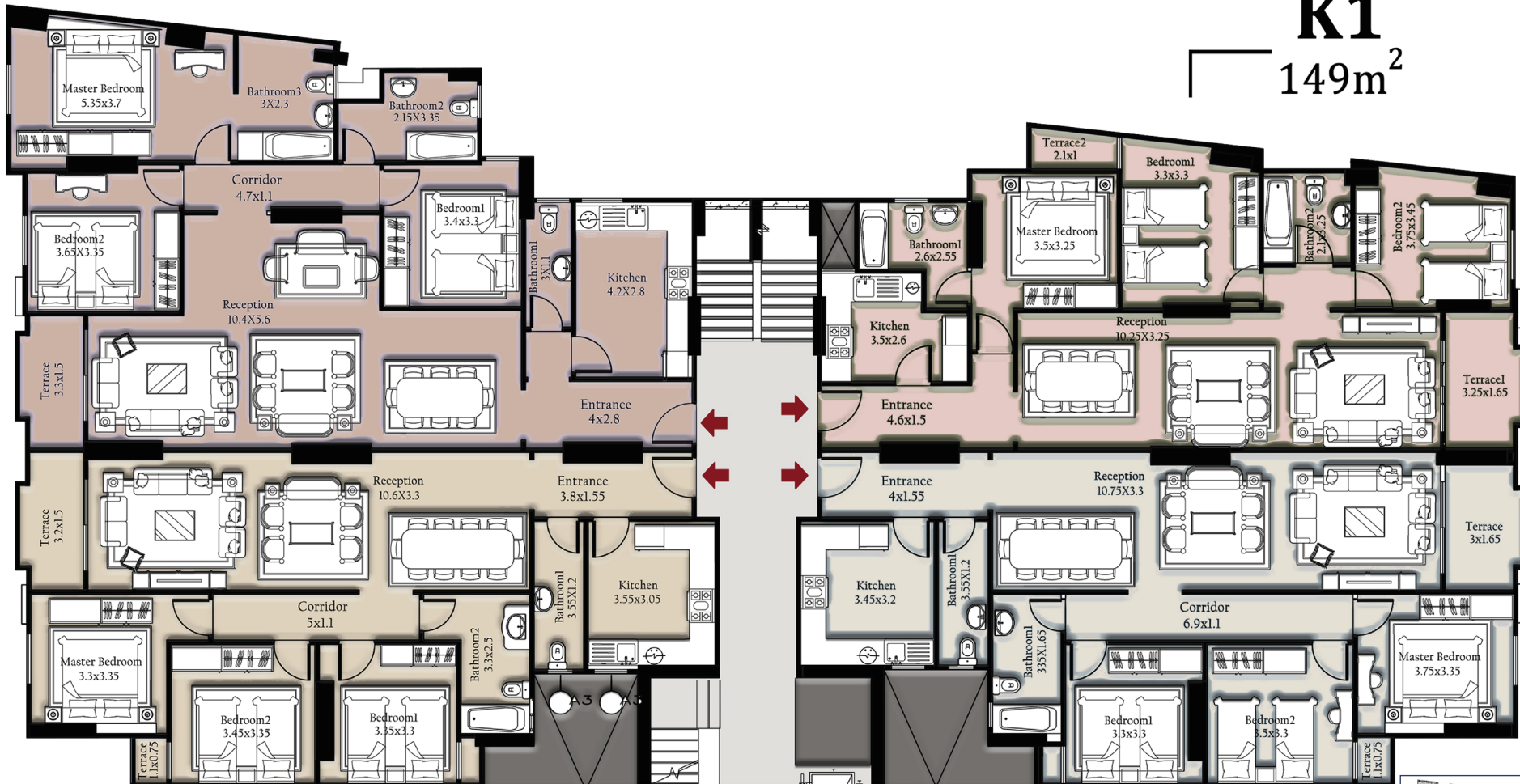
149m²

K3

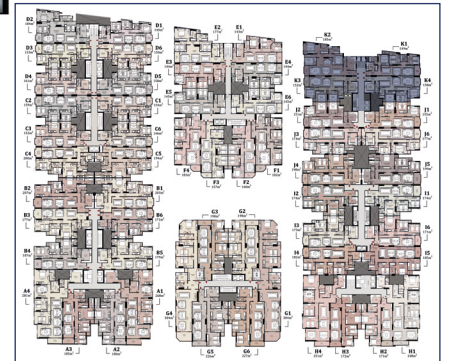
152m²

K4

158m²



type - (K)



J2
151m²

J1
155m²

J3
174m²

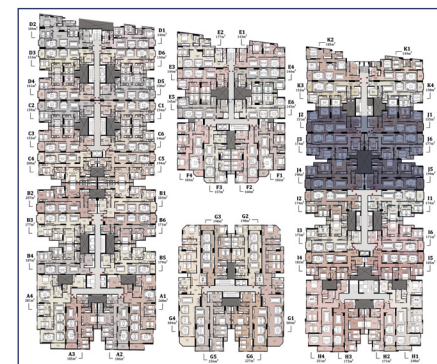
J6
177m²

J4
198m²

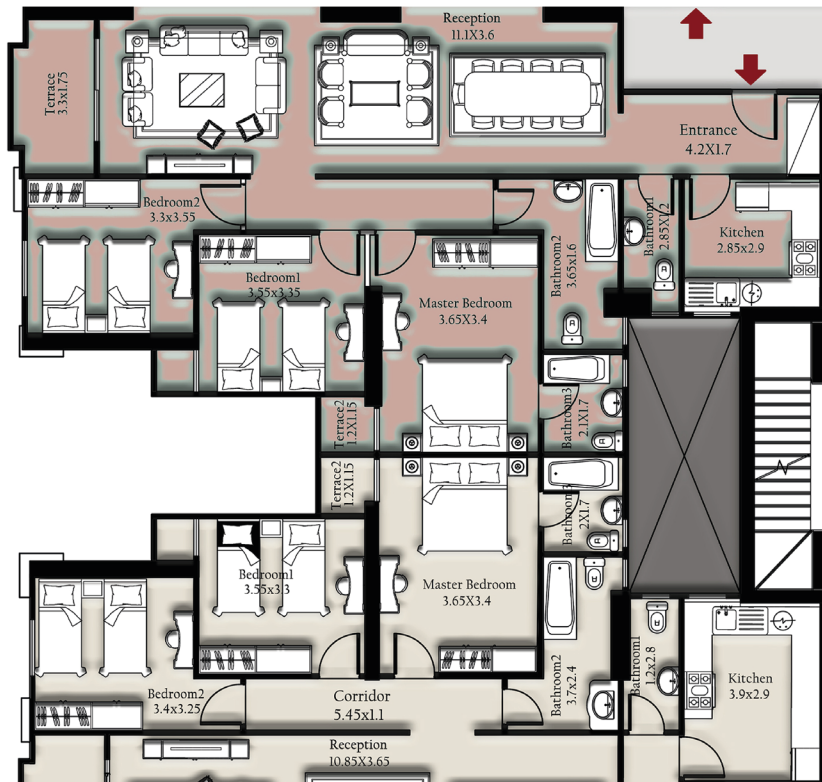
J5
199m²



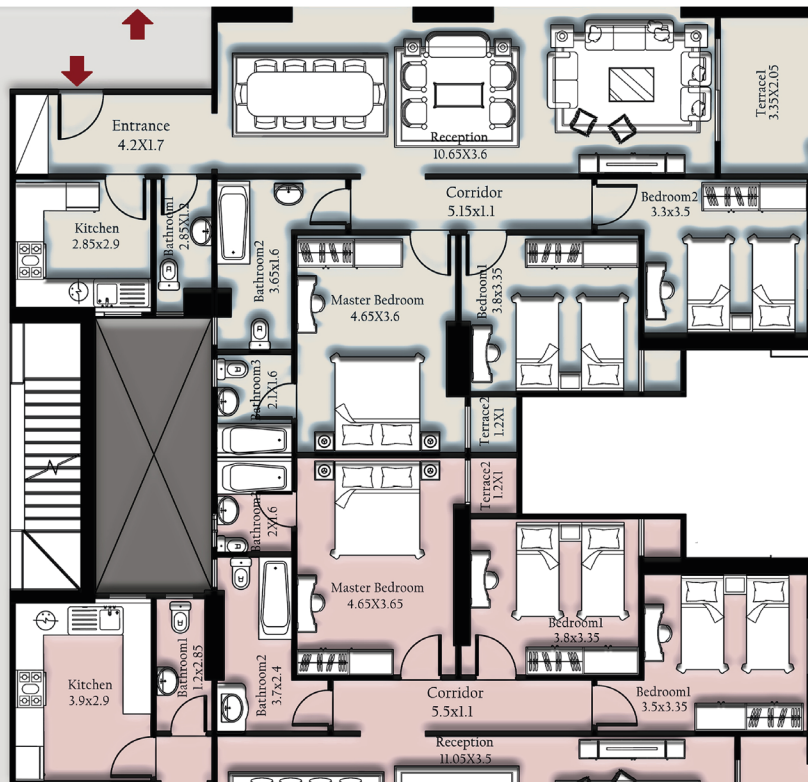
type - (J)



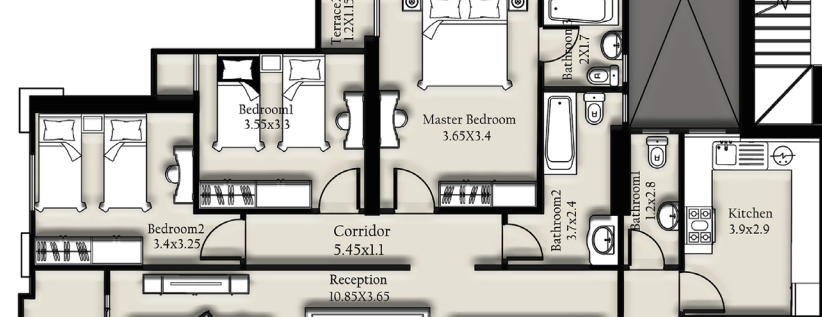
I2
174m²



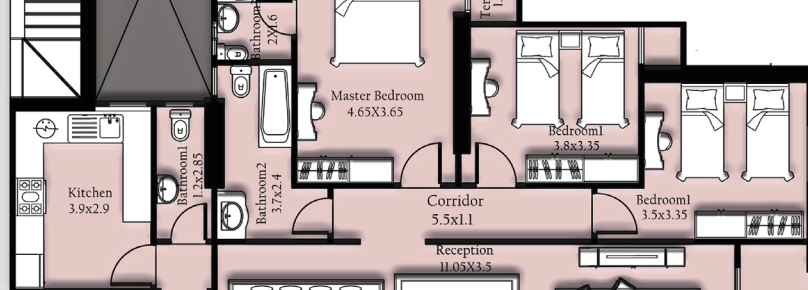
I1
174m²



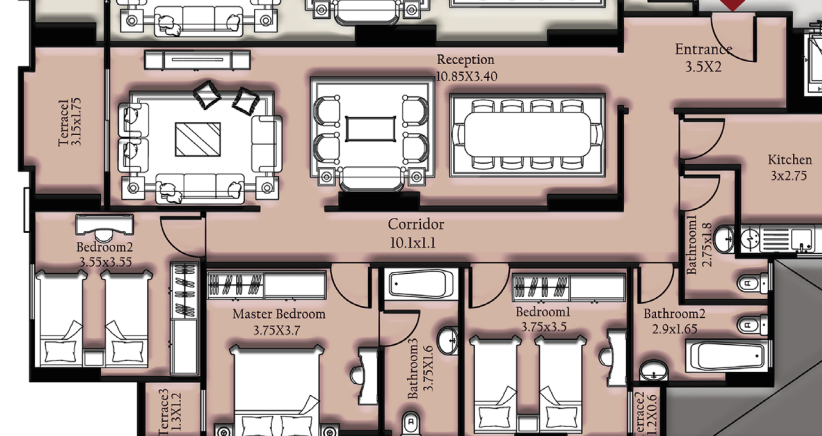
I3
173m²



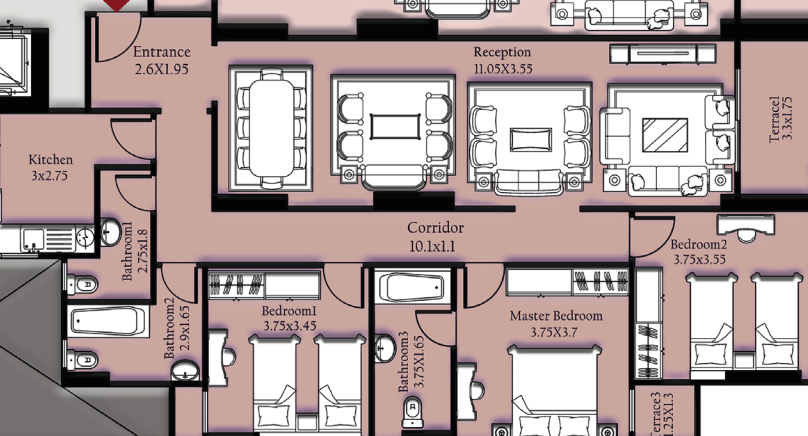
I6
171m²



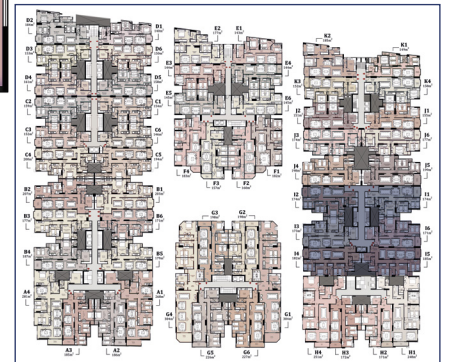
I4
182m²

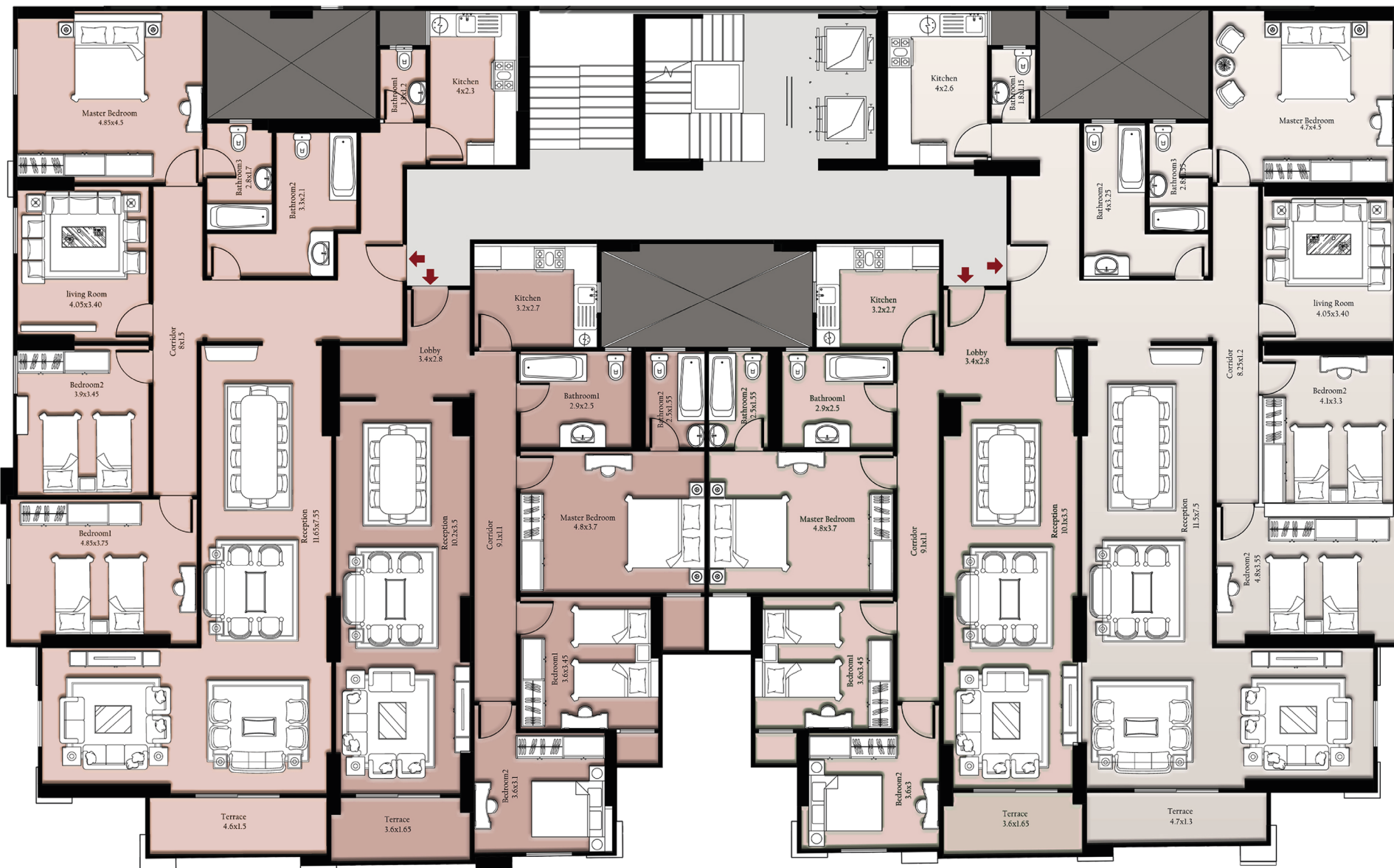


I5
185m²



type - (I)



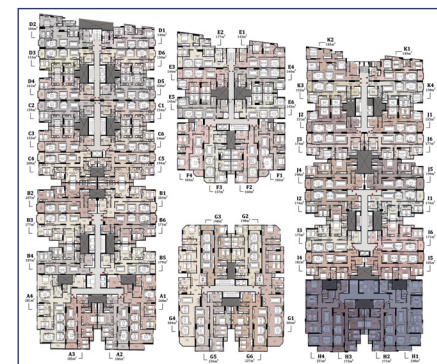


H4
251m²
type - (H)

H3
172m²

H2
171m²

H1
248m²





مجموعة الغنيمي
تاريخ من حديد

استثمر مع أقوى مطور
عقاري في الإسكندرية

EL-GHONIEMY STORY..

El-Ghoniemy Group was established at 1973 and began our success story in the field of rebar and cement trade, then in the field of contracting.

We joined the field of Development and Construction bringing new value and unique home designs which made us one of the strongest and leading companies in those fields due to our previous experience and mega projects in Alexandria which made Al-Ghoniemy Group an entity with an iron history.

الغنيمي..

واحدة من كبرى الشركات التي ذاع نجاحها في العديد من المجالات حيث تأسست عام ١٩٧٣م وبدأت مسيرة نجاح طويلة في مجال تجارة حديد التسليح والأسمنت ثم في المقاولات والإنشاءات ومن ثم تألقها في مجال التطوير والبناء مما جعلها واحدة من أقوى الشركات الرائدة في تلك القطاعات وشهد لها سابقة أعمال مليئة بالإنجازات والثقة جعل مجموعة الغنيمي كيان يمتلك تاريخ من حديد.

OUR PROJECTS





VALORE
SMOuha



EL GHONIEMY
GROUP

مجموعة الفنيمي

تاريخ من جديد

www.elghoniemy.com

15766
HOTLINE