

Saluga

ELITE COMPOUND

COMMERCIAL

صَوَائِرِ



About SAWARY

The future is there where the largest residential and commercial complexes in Alexandria, SAWARY is the most important tourist destination in Alexandria because of its prime location located minutes away from the main roads of Alexandria , its owns huge residential projects in addition to a sport club “SAWARY SC” next to the first and largest yacht marina in Alexandria and a world-class tourist promenade, Therefore, SAWARY is the first investment destination in Alexandria.





صَوَاوِيح

LOCATION

The new walkway Cornish of Alexandria at SAWARY.



5 minutes from
Alexandria's Library



18 minutes from
Alexandria's Port



7 minutes from
Alexandria's Stadium



30 minutes from
Borg Al Arab Airport



10 minutes from
Raml Station



14 minutes from
Sporting Club

Commercial



ABOUT COMMERCIAL SALUGA ELITE..

Experience the meaning of happiness and own all the appropriate life details that guarantee you a modern experience from now to the distant future, With the commercial units in saluga elite compound, where the modern designs with a privileged location that is minutes away from the vital points in Alexandria, the commercial units in saluga elite are flexible in price and spaces and suit all businesses with a wide area of free parking. Saluga elite ... Your investment future is guaranteed.



Facilities

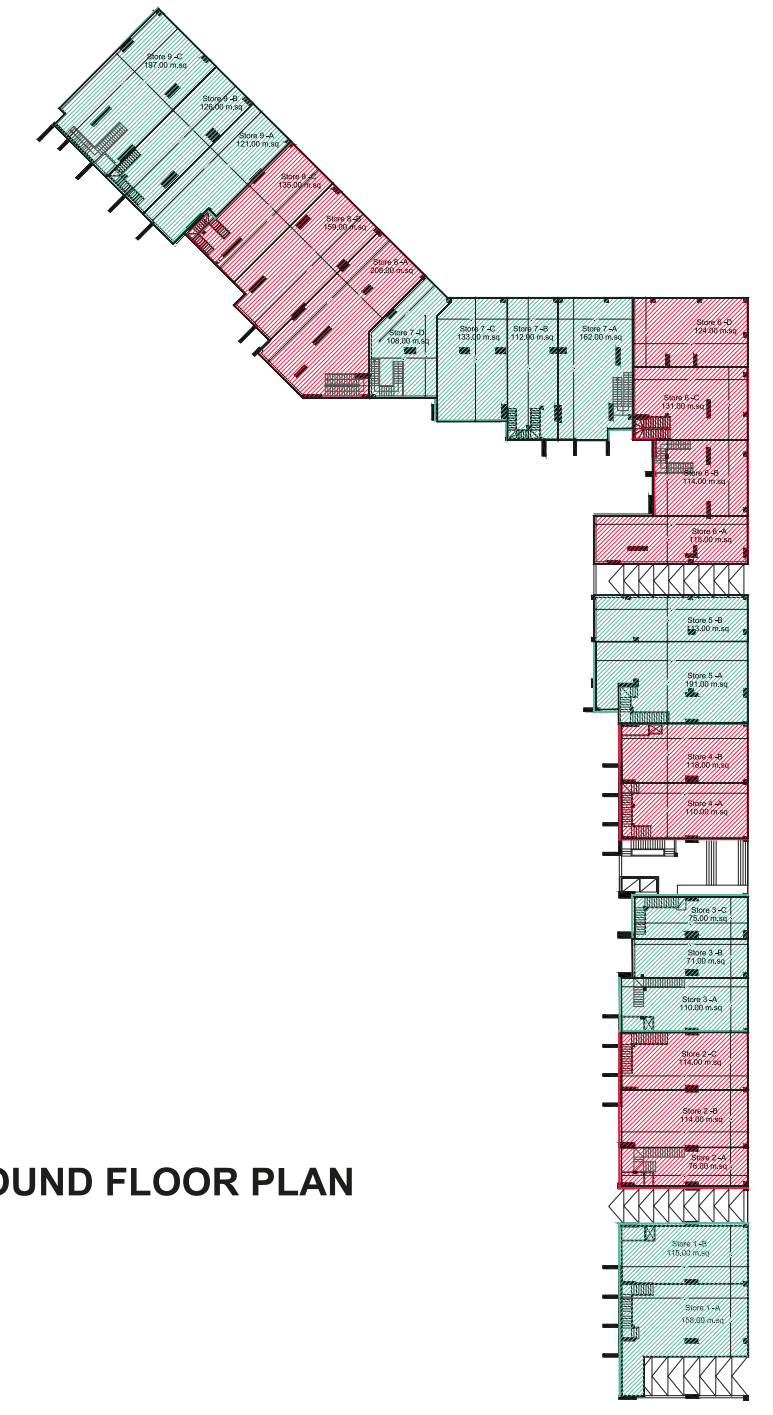




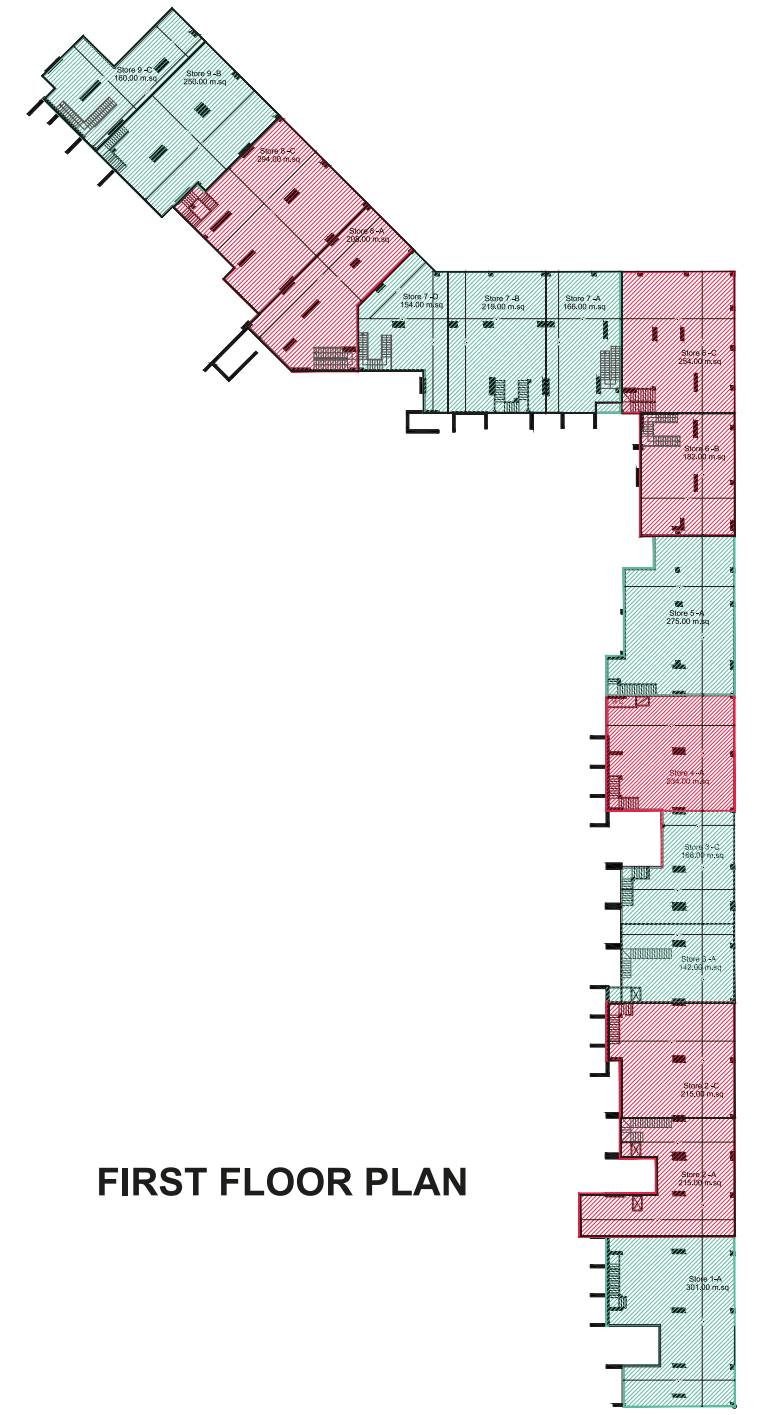


FLOOR PLANS

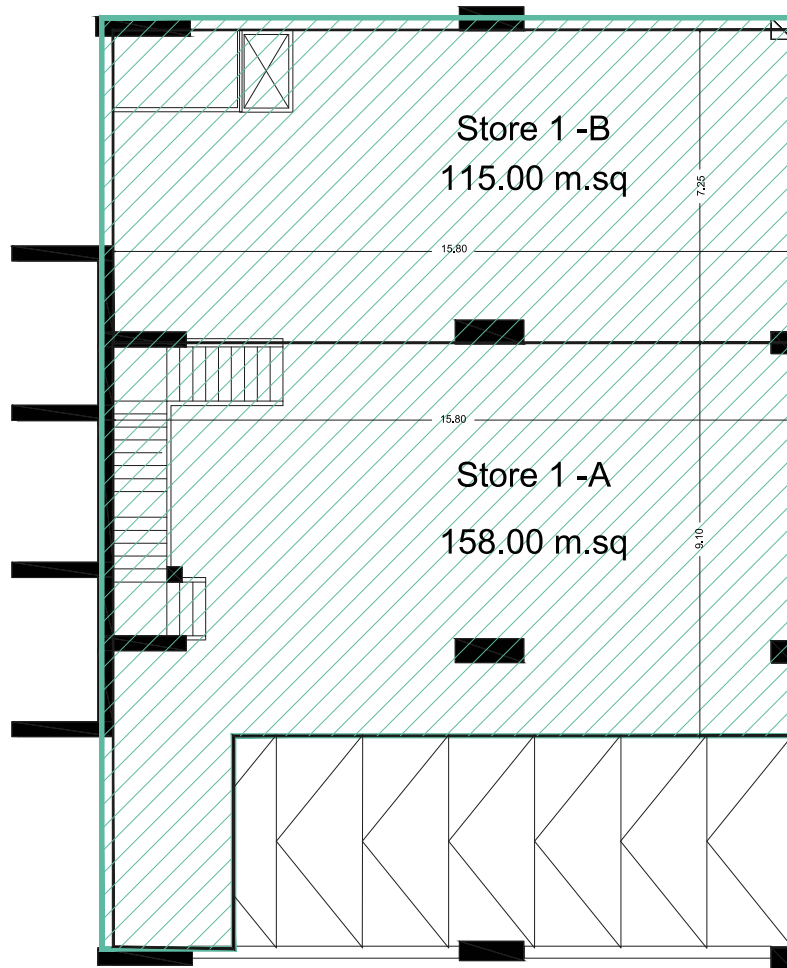
GROUND FLOOR PLAN



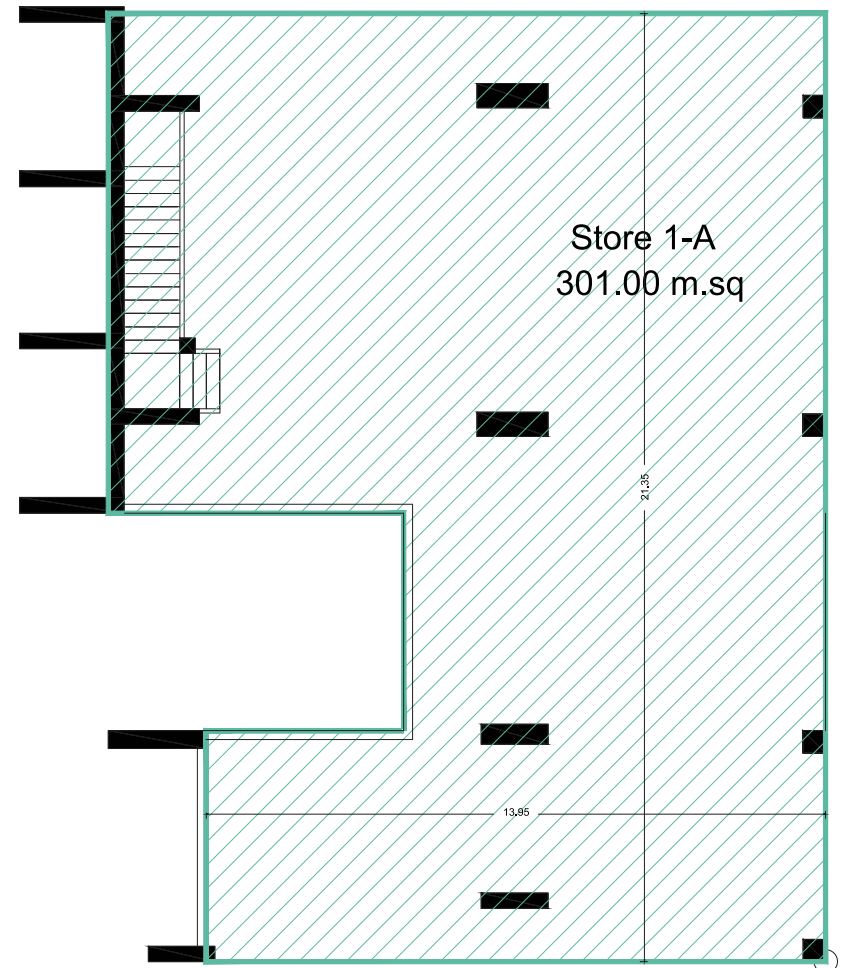
FIRST FLOOR PLAN



Store 1 - GROUND FLOOR PLAN

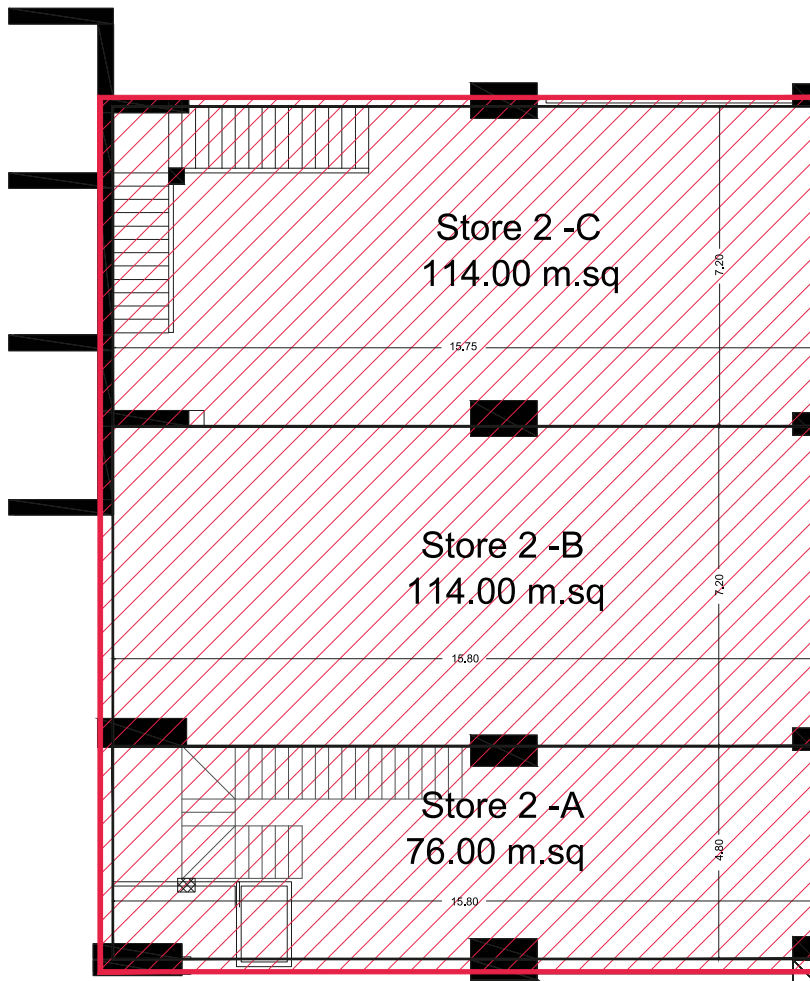


Store 1 - FIRST FLOOR PLAN

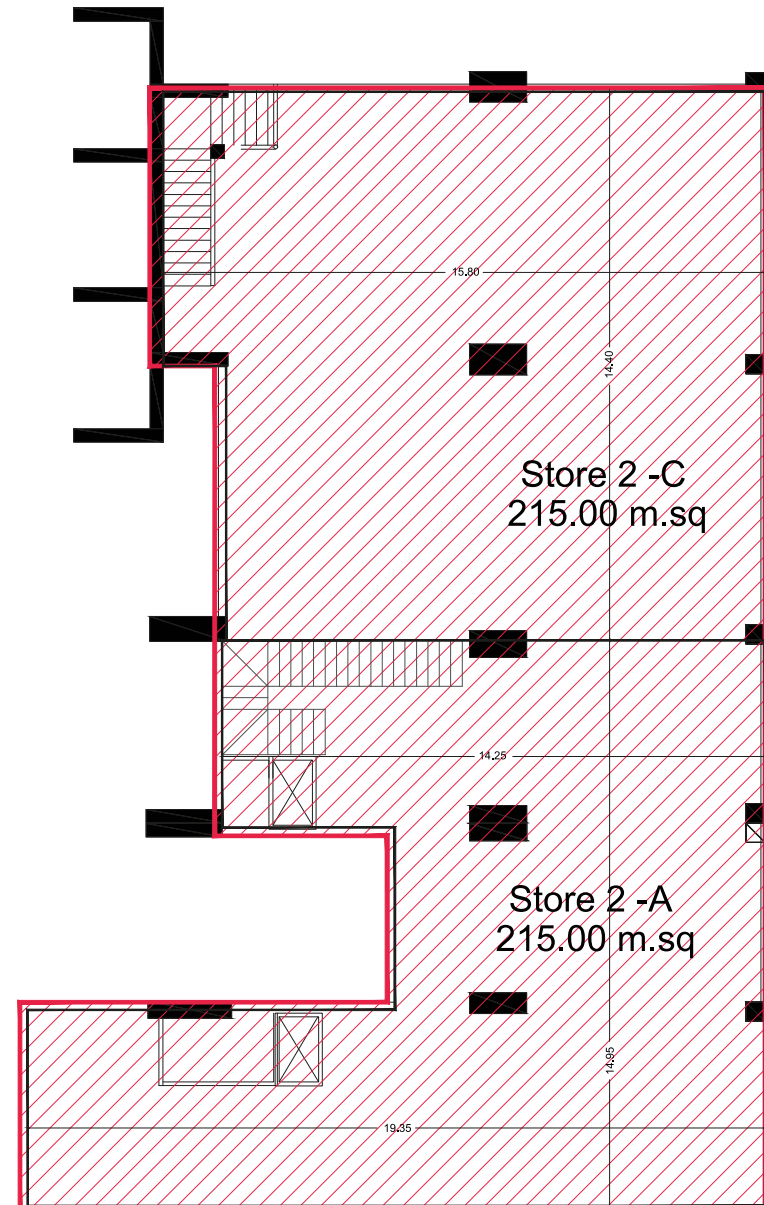


Store		Ground Floor	First Floor	Total Area
Store 1	Store 1-A	158	301	459
	Store 1-B	115		115

Store 2 - GROUND FLOOR PLAN

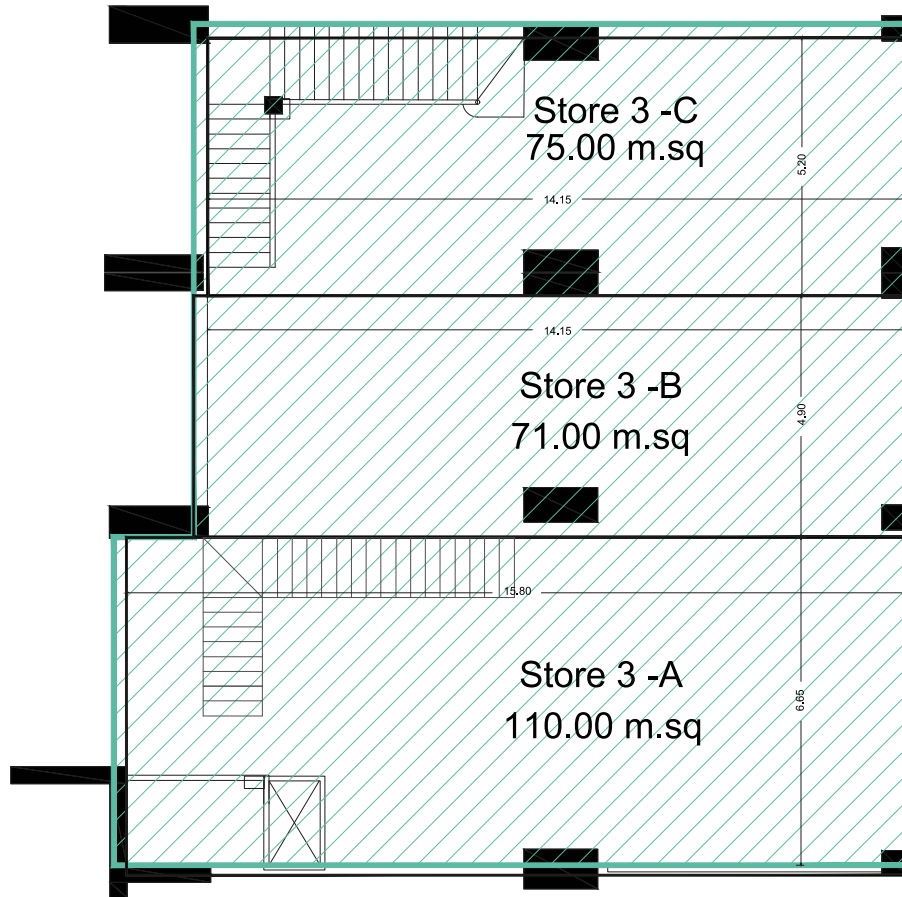


Store 2 - FIRST FLOOR PLAN

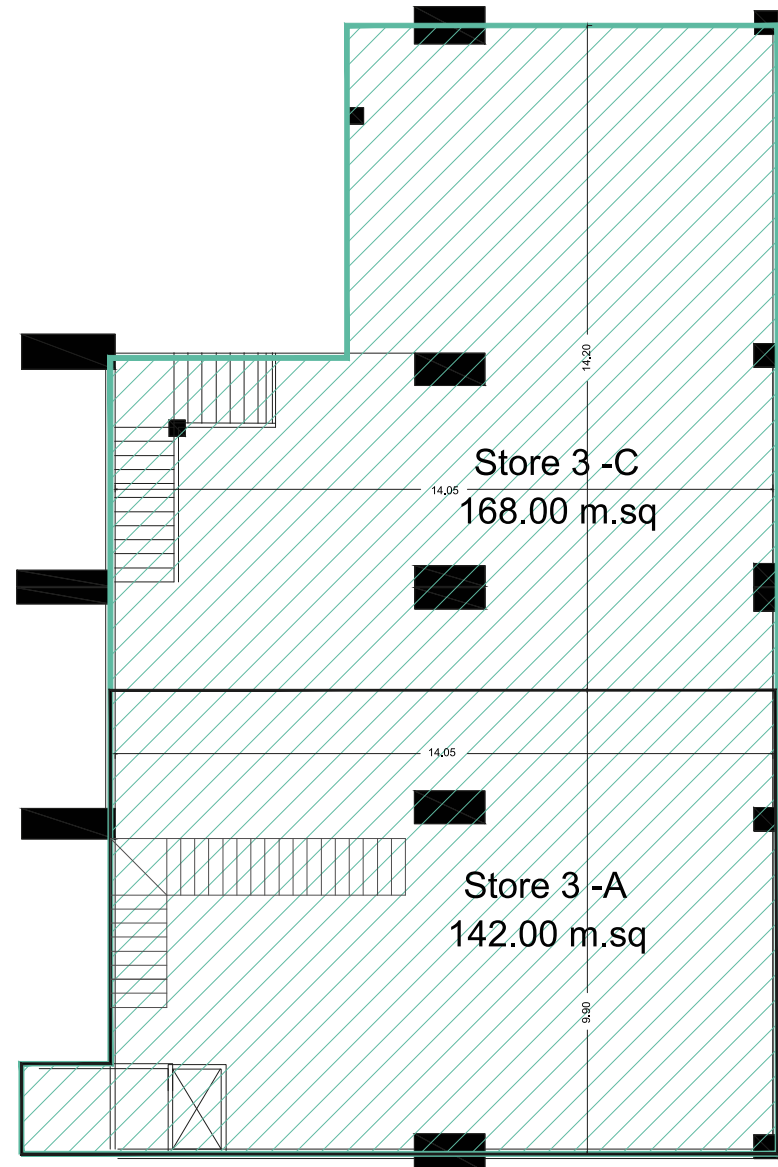


Store 2	Store 2-A	76	215	291
	Store 2-B	114		114
	Store 2-C	114	215	329

Store 3 - GROUND FLOOR PLAN

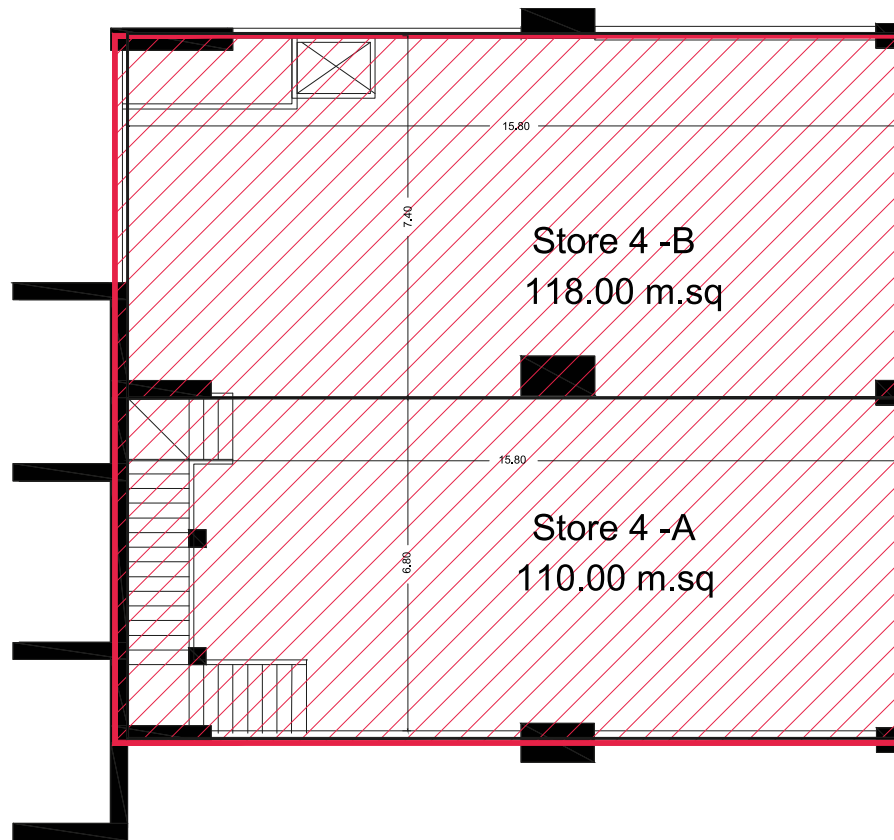


Store 3 - FIRST FLOOR PLAN

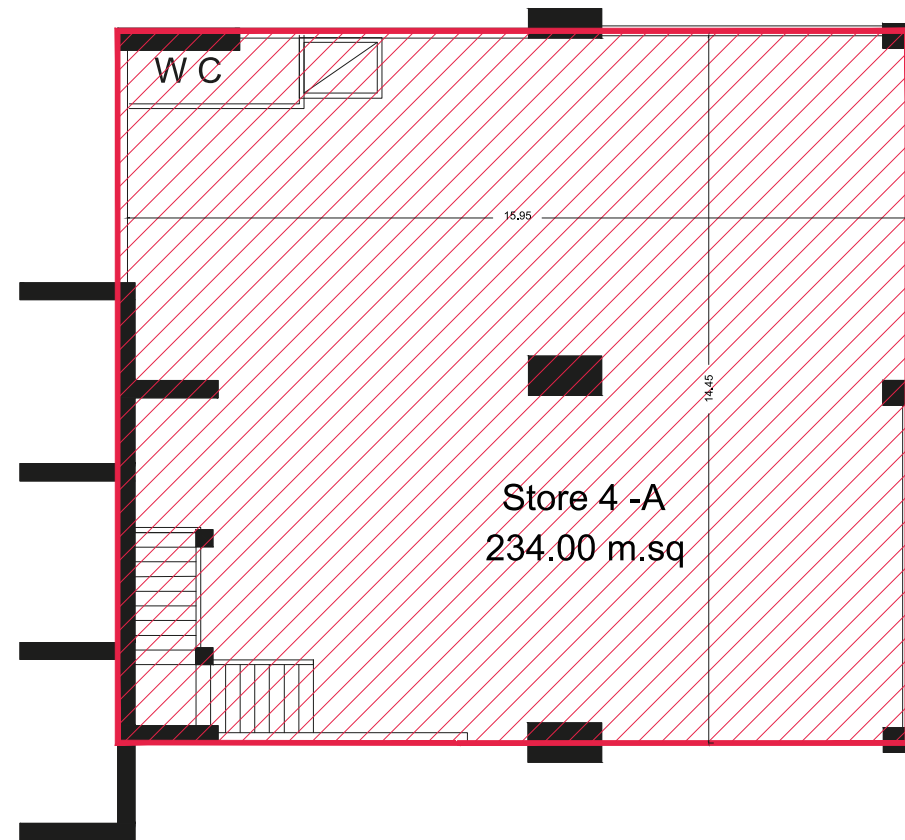


Store 3	Store 3-A	110	142	252
	Store 3-B	71		71
	Store 3-C	75	168	243

Store 4 - GROUND FLOOR PLAN

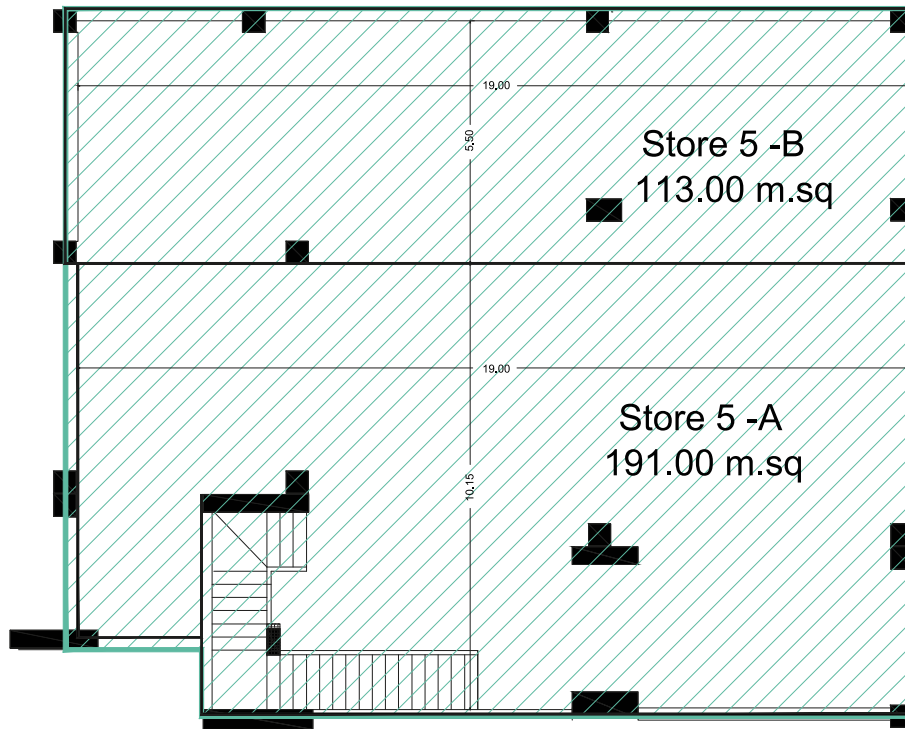


Store 4 - FIRST FLOOR PLAN

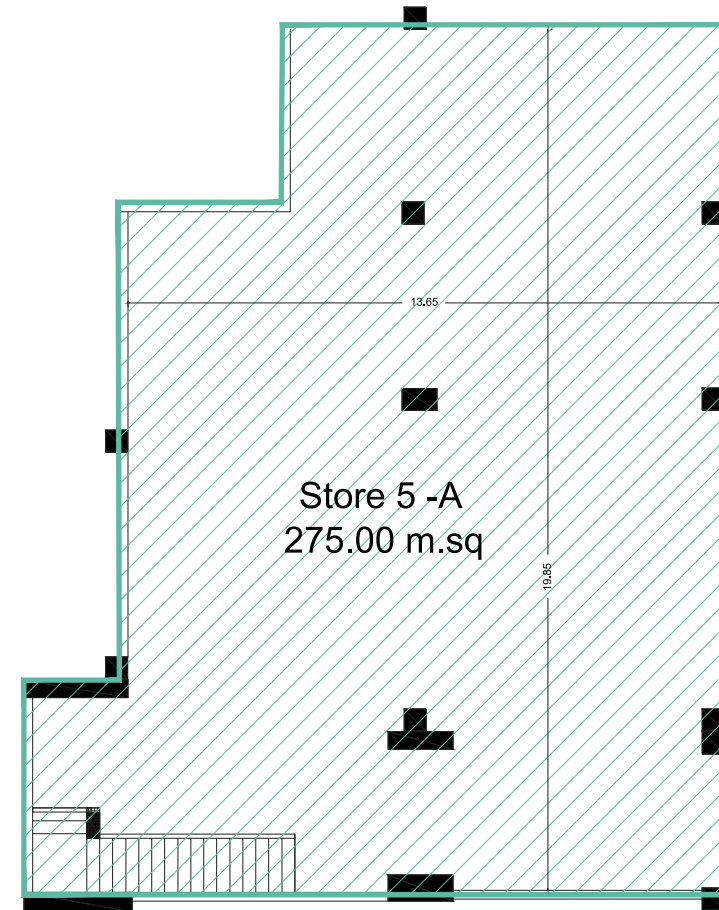


Store 4	Store 4-A	110	234	344
	Store 4-B	118		118

Store 5 - GROUND FLOOR PLAN

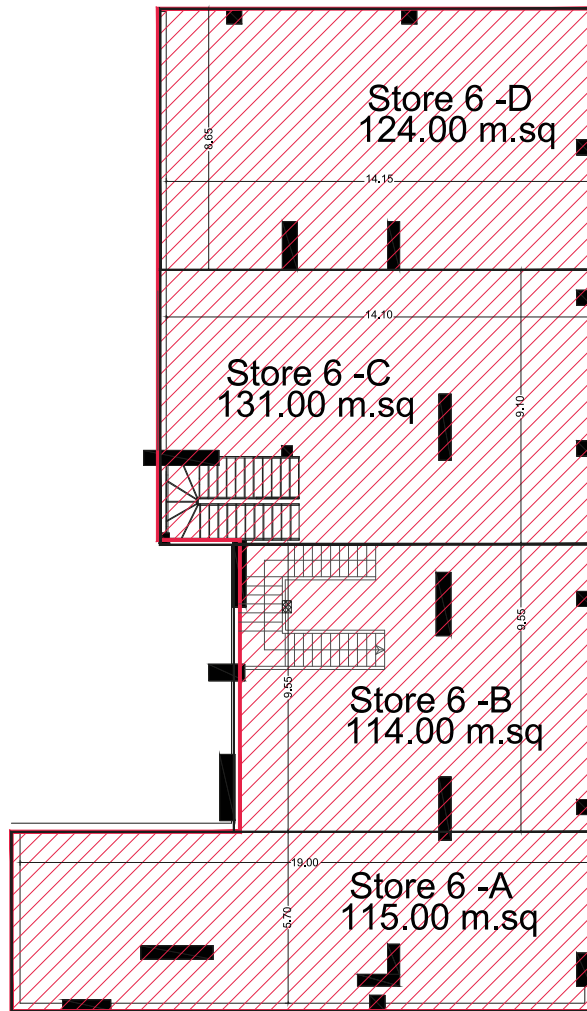


Store 5 - FIRST FLOOR PLAN

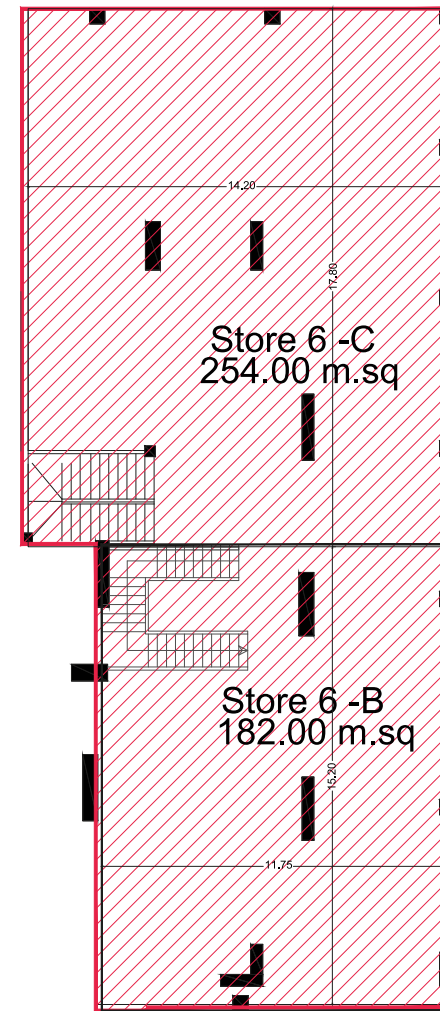


Store 5	Store 5-A	191	275	466
	Store 5-B	113		113

Store 6 - GROUND FLOOR PLAN

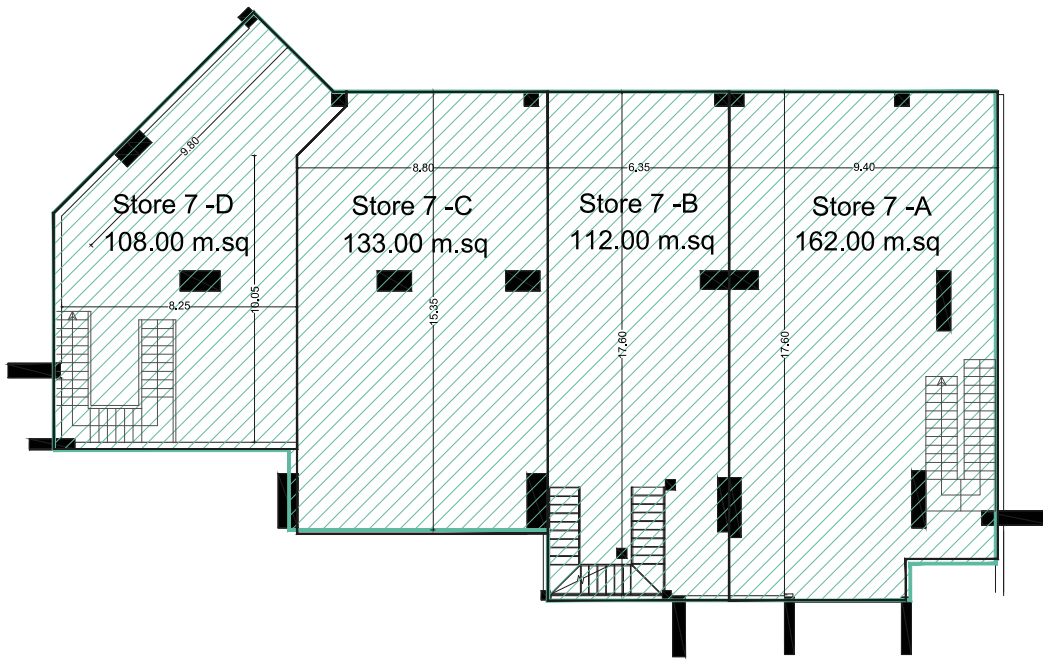


Store 6 - FIRST FLOOR PLAN

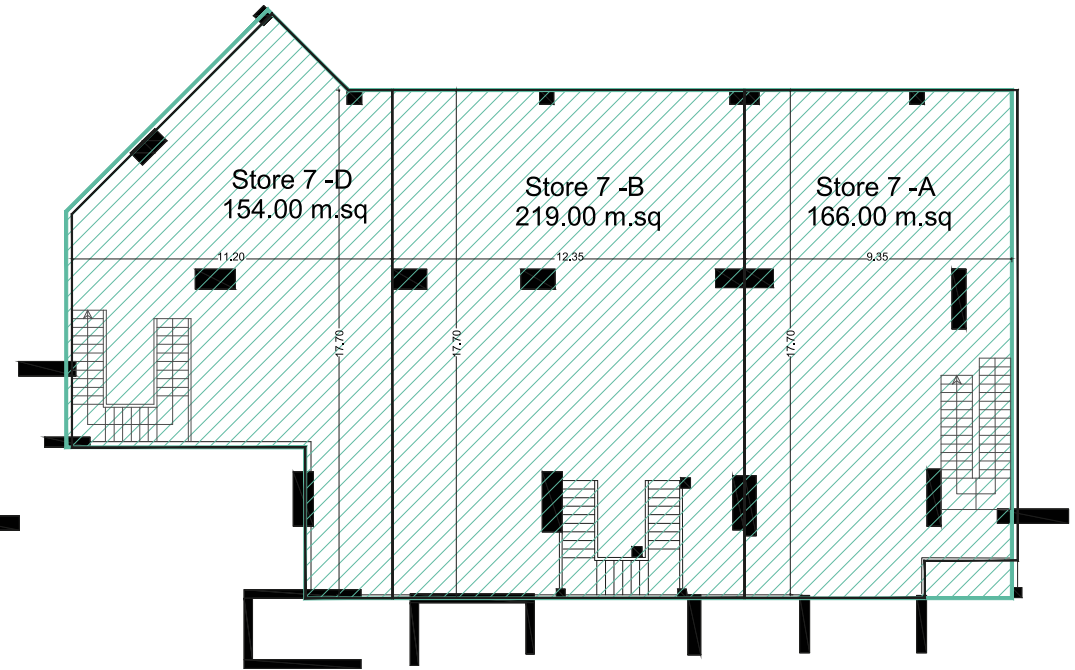


Store 6	Store 6-A	115		115
	Store 6-B	114	182	296
	Store 6-C	131	254	385
	Store 6-D	124		124

Store 7 - GROUND FLOOR PLAN

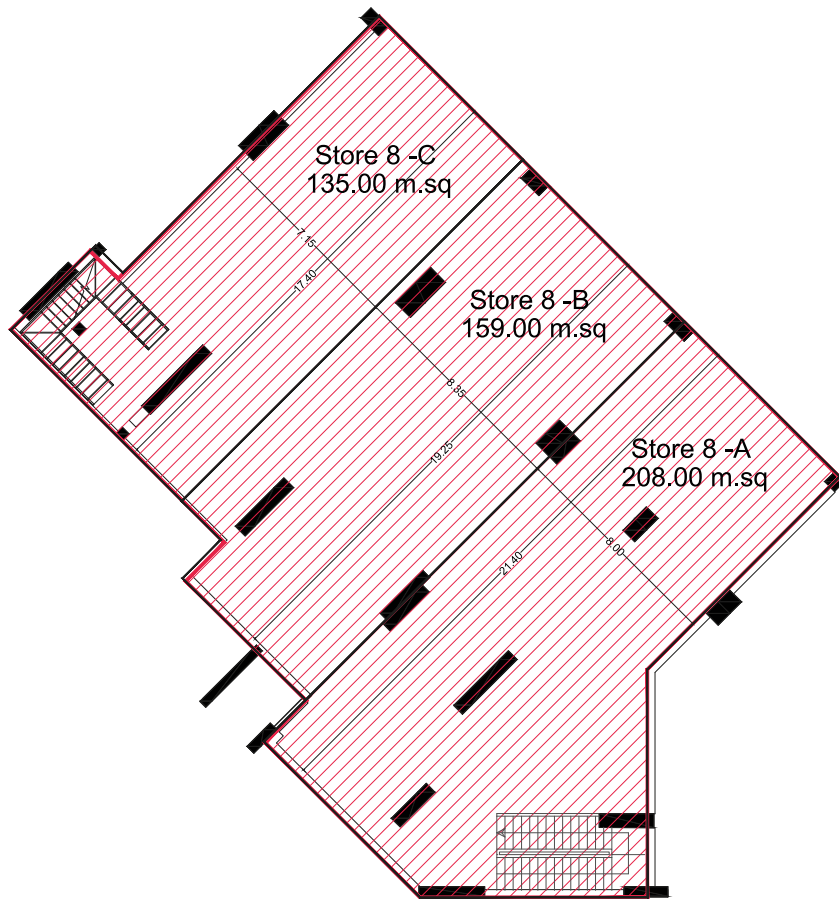


Store 7 - FIRST FLOOR PLAN

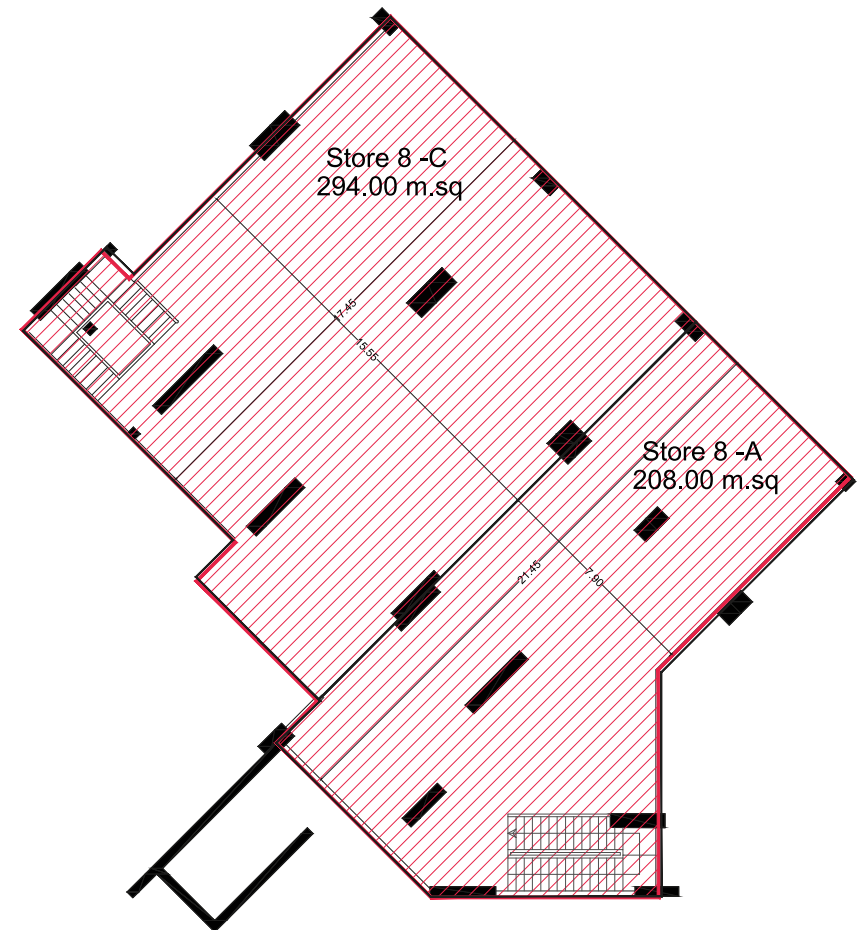


Store 7	Store 7-A	162	166	328
	Store 7-B	112	219	331
	Store 7-C	133		133
	Store 7-D	108	154	262

Store 8 - GROUND FLOOR PLAN

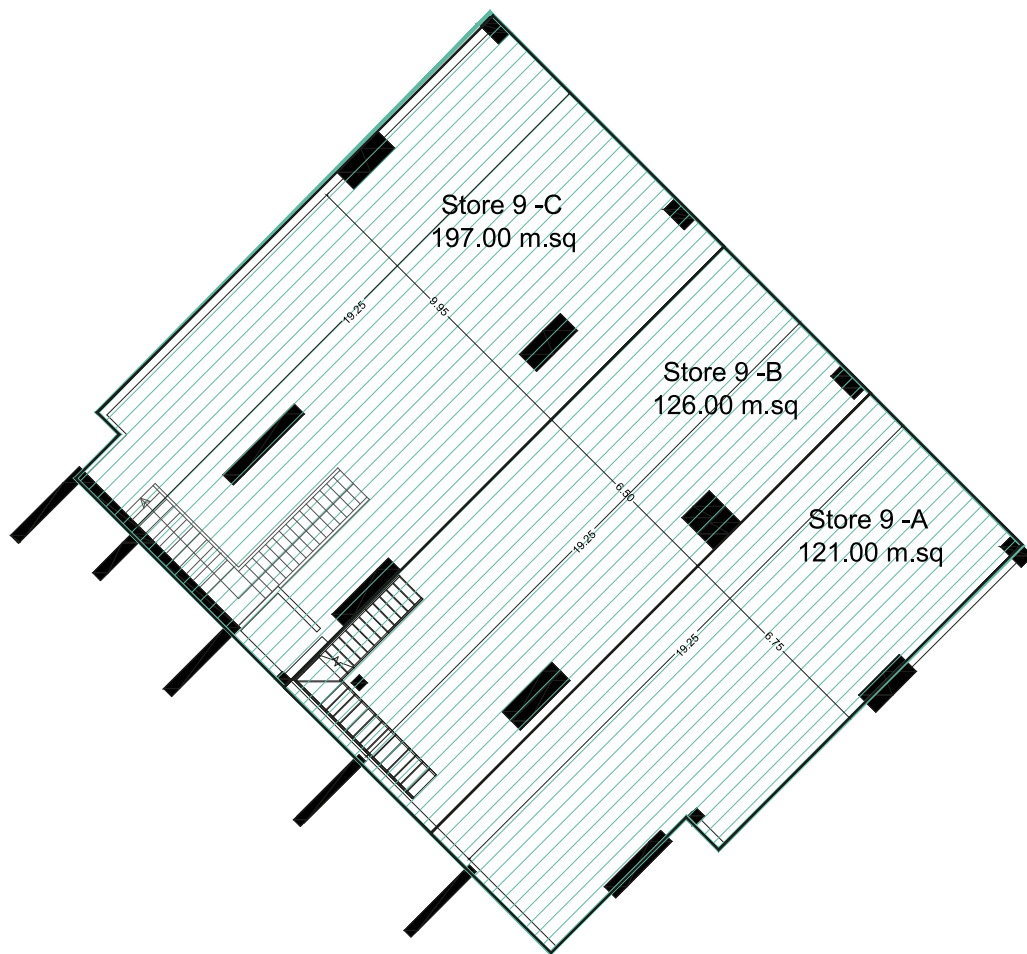


Store 8 - FIRST FLOOR PLAN



Store 8	Store 8-A	208	208	416
	Store 8-B	159		159
	Store 8-C	135	294	429

Store 9 - GROUND FLOOR PLAN



Store 9 - FIRST FLOOR PLAN



Store 9	Store 9-A	121		121
	Store 9-B	126	250	376
	Store 9-C	197	160	357

CONTENT US:

Head Office:

10 Alexandria - Cairo, Agricultural Road

info@elghoniemy.com

www.elghoniemy.com



EL GHONIEMY
G R O U P



مجموعة الفنيمي

تاريخ من جديد

15766
HOTLINE